

# ANNUAL REPORT 2019-2020



**North West Cancer Research**  
200 London Road, Liverpool, L3 9TA

Visit [nwcr.org](https://nwcr.org)  
or call **0151 709 2919**  
or email: [info@nwcr.org](mailto:info@nwcr.org)  
for more information

Registered Charity No. 519 357







# INTRODUCTION

CHAIRMAN’S REPORT	04
CEO’S REPORT	06
RESEARCH REPORT	10
RESEARCH CASE STUDY	15
WHAT WE CURRENTLY FUND	16
RESEARCH CASE STUDY	22
FINANCIAL SUMMARY	24
STATEMENT OF FINANCIAL ACTIVITIES	26
BALANCE SHEET	27
TRUSTEES, ADVISORS AND PATRONS	28



# CHAIRMAN'S REPORT

**This will be my last report as the Chair of North West Cancer Research as, after six-years, I will be stepping down to take up new responsibilities. However, I will continue to serve as a Trustee of the Charity and I am very much looking forward to seeing how North West Cancer Research moves out of the pandemic and into the future.**



I'd like to think that in the last six-years, we have made significant progress and have really moved the Charity forwards, advancing the fight against cancer. During my time as Chair, we have been fortunate enough to fund almost £12m of world-class research – much of which has been aimed at understanding the causes of cancer and through that, identifying important routes to treat and defeat the condition.

Cancer remains a complex problem. Here in our region, we experience some of the highest levels of cancer in the UK and sadly, we also have high levels of mortality as a result of the disease. Some cancer types are far more common in our region than we would expect to see when looking at the national picture. The causes of this pattern we believe to be local environmental, social and life-style factors as well as underlying genetic traits.

As we move out of the pandemic and start to look towards the future, we need to redouble our efforts to tackle the cancer types which affect us so much in this region. We need to ensure that future generations are able to live longer and healthier lives – and that the impact of cancer on them is reduced.

The pandemic will have had an enormous effect on the delivery of cancer services by the NHS and has also created a period of time in which many people have not attended screening services or reported symptoms to their GP. As a regional cancer charity, we need to play our part in ensuring that people in our area have access to relevant and effective information in a way that helps their awareness of the early symptoms of cancer and encourages them to seek help when needed.

I would like to take this opportunity to thank all of you who have supported North West Cancer Research in different ways over recent years. Your commitment to raising funds, taking part in events, opening your homes and to telling other people about the Charity is so appreciated. Without you, we would not be able to function and we would not be able to fund our vital work.

I'd also like to thank my fellow Trustees who give their time and knowledge without charge and who add so much to the Charity.

Since joining the Charity, I have met so many remarkable people who have given and raised so much for us. Many of them are no longer with us – but we remember them, and their spirit and determination to make the future better lives on.

I look forward to seeing how North West Cancer Research continues to develop and how it puts our region's cancer needs first – as we work towards our mission of a cancer-free future.

A handwritten signature in black ink, appearing to read 'Nigel Lanceley', with a stylized flourish at the end.

**Nigel Lanceley**  
Chairman



# CEO'S REPORT

**Anyone reflecting on 2020 will note that this has been a year with few parallels. The arrival of a novel virus has had a huge impact on every single person in our region– whether through the loss of a loved one, illness or simply the changes which have come with lockdowns and the disappearance of many things which we have taken for granted. Few can recall a time when so few events took place and when there were so many restrictions on our social lives.**



North West Cancer Research is certainly not alone in experiencing a very unusual year in 2020 and this is reflected in a very different looking annual review document to the one we produced 12-months ago. Gone are the reports focussed on our fundraising groups, the marathon runners and big events. Also missing is the tradition of holding our Annual General Meeting in person – replaced for now, with a virtual event. We very much look forward to all of these things returning as soon as it is safe to do so.

Covid-19 has had a dramatic effect on our year, which it is perhaps worth recounting at this time.

Like the rest of the UK, the Charity went into lockdown in March 2020 as the office closed and the team moved to home working. We were sad to see so much of our vital work being paused during this time as

laboratories at all of our funded institutions were closed down and new safety measures were put in place.

The effect on research studies which were based in hospitals and with patients at their centre was dramatic, as the National Institute for Health Research suspended all work which was not focussed on Covid-19. We are grateful to the institutions we fund and the academics we work with for putting safety measures in place so quickly and for enabling our essential work to restart after just three-months.

Financially, North West Cancer Research braced for a difficult time during the pandemic. Holding our reserves in investments has provided a valuable income source for us for many years but it did mean that as world stock-markets fell, so did the funds available for investment into research. Fortunately, we had diversified our assets in 2019 and were able to lessen the impact of the market changes.

So many events planned by our loyal supporter groups were not able to take place. But, we are thankful to so many of our supporters for making donations to us in what has been a challenging time for everyone. Our fundraising appeals to our long-term donors were some of the most successful and were invaluable when so many charities were appealing for help. Overall, our income during

the year fell by around 14% from £1.80m down to £1.54m although this was helped by a very welcome income from legacies.

The uncertainty of 2020 meant that the Charity had to reduce our research outlay – although we were able to select and start a number of really exciting new projects. This included two studies which seek to use biomarkers to enable the early diagnosis of lung and prostate cancers to aid early diagnosis. Other projects focussed on the cellular causes of cancer and the development of effective immunotherapy as a new way of treating cancer within the body. Alongside these we have continued to invest in the future of our research community, developing the next generation of cancer researchers with summer studentships, one-year research masters projects along with smaller numbers of PhD studentships.

We also shouldn't overlook the impact of the pandemic on cancer patients and those awaiting hospital appointments. We are so aware that this has been a difficult time for those undergoing treatment with so many operations and treatment cycles cancelled or delayed. We also see that many people will have stayed away from health services, including screening tests and appointments with their GP during the year and that this will bring with it an increased cancer burden for the future.

So, what does the future look like for North West Cancer Research? We remain certain that there is a clear role for us in helping to tackle the high level of cancers in our region. Cancer rates are growing nationally, and in the North West and North Wales, we have some of the very highest rates. In 2021 we will publish our second regional report focussed on the cancer types which are more common in our area. We will accompany this with an Impact Report, looking at the great work the Charity is funding to tackle cancer in our region.

We will continue to focus on understanding the cause, improving the care and finding the cure for cancer, but we will add to this in two areas. The first is in understanding our region and what makes us different. So often we talk about the higher cancer rates in our area and are asked why this is the case? This is something which we need to really understand and improving our knowledge on this will help us to know how to fight cancer more effectively. We will also seek to grow our education, information and outreach to tackle the almost 40% of cancers which are linked to lifestyle factors and therefore preventable.

We are excited to be working in partnership with a number of other regional charities in order to fund cancer research work which is relevant to our region and funded here as well. More information will follow on this but working together increases the resources available for our work and the benefit for the people of our region.

In order to do all of this, we are reliant on our kind supporters and donors. We are indebted to them for their support and the way in which they continue to give. We thank each one of them individually for their commitment to the battle against cancer in our area. In 2021 we're looking forwards to coming out to see you again and working alongside our volunteers and supporters to raise essential funds to advance cancer research work.

I know that with your help and support North West Cancer Research will continue to grow and fund more ground-breaking work which will create a better future for people in our region and beyond.



**Alastair Richards**  
CEO







# RESEARCH REPORT

## Governance

North West Cancer Research is a member of the Association of Medical Research Charities (AMRC) and this means that we follow externally laid down principles when deciding which research applications to fund.

All projects are subject to external review by experts from the UK and beyond, as we seek to ensure that we only fund the best work and that projects break new ground in research. Projects go before a research funding panel in order to rank them against other applications for funding, so that only the very best work is funded.

These research panels are made up of experts from the academic and clinical communities across the UK. Potential conflicts of interest are carefully managed.

We seek to ensure that each of our advisory groups is closely aligned with the work funded and therefore, we have specific advisory groups as follows:

### Cancer Discovery Advisory Group



### Underpinning Research Advisory Group



### Applied Research Advisory Group, which also oversees work on cancer inequalities



Each Group oversees a funding round and then based on the merits of the applications received, the advisory group makes recommendations to the Board. The final decision on how many projects to fund lies with the Board of Trustees.

The Board of Trustees is also informed by our Research Strategy Group. This group comprises of senior academics and clinicians who advise on research development and strategy. The research strategy enables researchers to understand what the Charity's priorities for funding are.

The Research Strategy Group also advise the Board of Trustees on grant applications for capacity and structure funding from academic institutions and NHS organisations. These include applications for chairs, lecturers, fellows and summer studentships.

The Charity would like to thank all of the researchers, scientists, academics and others who have given their time this year in order to review and report on the project applications received. This process for gaining funding is highly competitive and therefore the task of reviewing applications is one of growing complexity.

## Public and Patient Representation in Advisory Groups

We strive to fund research that is relevant and important to our local population. The patient voice is vital to influence our decisions on the importance of the funding applications we receive, as well as contributing to our future objectives.

We have engaged with public and patient representatives and are moving towards fully embedding them in our activities in order to bring the patient voice and perspective into our decision-making more fully.

We are grateful for the time and effort these 'experts by experience' give and for their valuable contributions in our decision-making.

## Investing in the cause, care and cure of cancer for our region

In this financial year, we awarded over £1.2 million to cancer research projects – a figure which was well down on the £2.7m in the year before, as we took a cautious but necessary approach because of the pandemic.

This year saw North West Cancer Research prioritise improvements in the experiences and outcomes of people with cancer in our region, as well as funding work seeking to

identify the causes of cancer in the body. This included our first funding round aimed at understanding and reducing the inequalities in cancer rates in our region, along with new ways of tackling these.

## Our research objectives continue to be:



**Improving the prevention,  
diagnosis and treatment  
of cancer in the region**



**Addressing the inequalities  
in cancer across the region**



**Encouraging collaboration  
between researchers in  
the region**



**Improving dissemination  
of the results and impact  
of our research to the public**

We support a wide range of 'bench to bedside' cancer research through our funding streams and continue to focus donations on research that seeks a cure for cancer, whilst also improving the lives of people living with cancer now.

Alongside this, we continue to invest in the researchers and scientists of tomorrow, and during the year invested in new PhD funding programmes, along with summer studentships.

## Defining priorities

Ensuring the region's cancer needs are represented in these research streams has been achieved by encouraging researchers to develop proposals that directly benefit people living in the North West and North Wales. This ensures our funding tackles the differences in cancer levels or outcomes, as well as the differences or challenges to cancer treatments or services in the region. We are therefore not only driving impact for local people but also contributing to the wider understanding of cancer and clinical or supportive care.

In addition, North West Cancer Research has responded to the high-level priority in the UK to improve cancer outcomes through early diagnosis initiatives. Across all research programmes, we encourage researchers to develop proposals which aim to promote the earlier diagnosis of cancer and improve outcomes through initiatives that tackle this.

Looking forwards to 2020/21, the Charity will review and reconsider our strategy and how we prioritise our funding in what will undoubtedly be a difficult economic environment. However, it is certain that funding world-class research, focussed on the needs of our region, will remain at the heart of what we do.

## Developing the cancer scientists of tomorrow

We continue to invest funds to help build research capacity in our region. This funding ensures the highest quality research occurs locally and develops the next generation of cancer researchers.

Our Research Development Fund has now operated for a number of years. These 'pump-priming' grants encourage novel ideas which require initial funds to test a hypothesis and provide researchers with an opportunity to gather the data required to take the research to the next step.

Our 'Youth Academy' supports early career cancer research scientists through a programme of PhD studentships in cancer discovery science.

We have also funded a Career Development Fellowship to attract top quality researchers to the region and are delighted with the progress which the appointed scientist is making on re-purposing existing treatments to tackle head and neck cancer – a real regional priority. Their five-year funding, awarded in August 2019, will develop and establish the Fellow as a future group leader in cancer research.

We have partnered with KESS2, a European Convergence programme, to fund PhD students and four more MRes students in Medical Sciences at Bangor University. These students study cancer biology and build on their early interest and experiences for a future in cancer research.

To attract researchers to cancer research, we also funded a series of paid summer Internships with the Faculty of Health in Lancaster University. Summer scholarships in Lancaster allowed undergraduate students to study techniques and methods in cancer research - introducing them to a possible future career in cancer.

## Encouraging collaboration and knowledge sharing

North West Cancer Research encourages knowledge sharing to ensure local researchers stay up to date with findings and can share their own research outcomes from papers published in a supportive peer to peer environment.

Our annual Scientific Symposium brings together local, national and international researchers, clinicians and scientists to showcase the academic and clinical knowledge generated from the funding of North West Cancer Research. Sadly, the event was scheduled for April 2020 and so had to be cancelled, but we look forward to rescheduling the event in the near future.

In addition, we were proud to partner with the National Institute of Health Research Clinical Research Network (NIHR CRN). Working in collaboration with NIHR CRN North West Coast has expanded our funding and attracted world-class researchers to our funded research programmes.

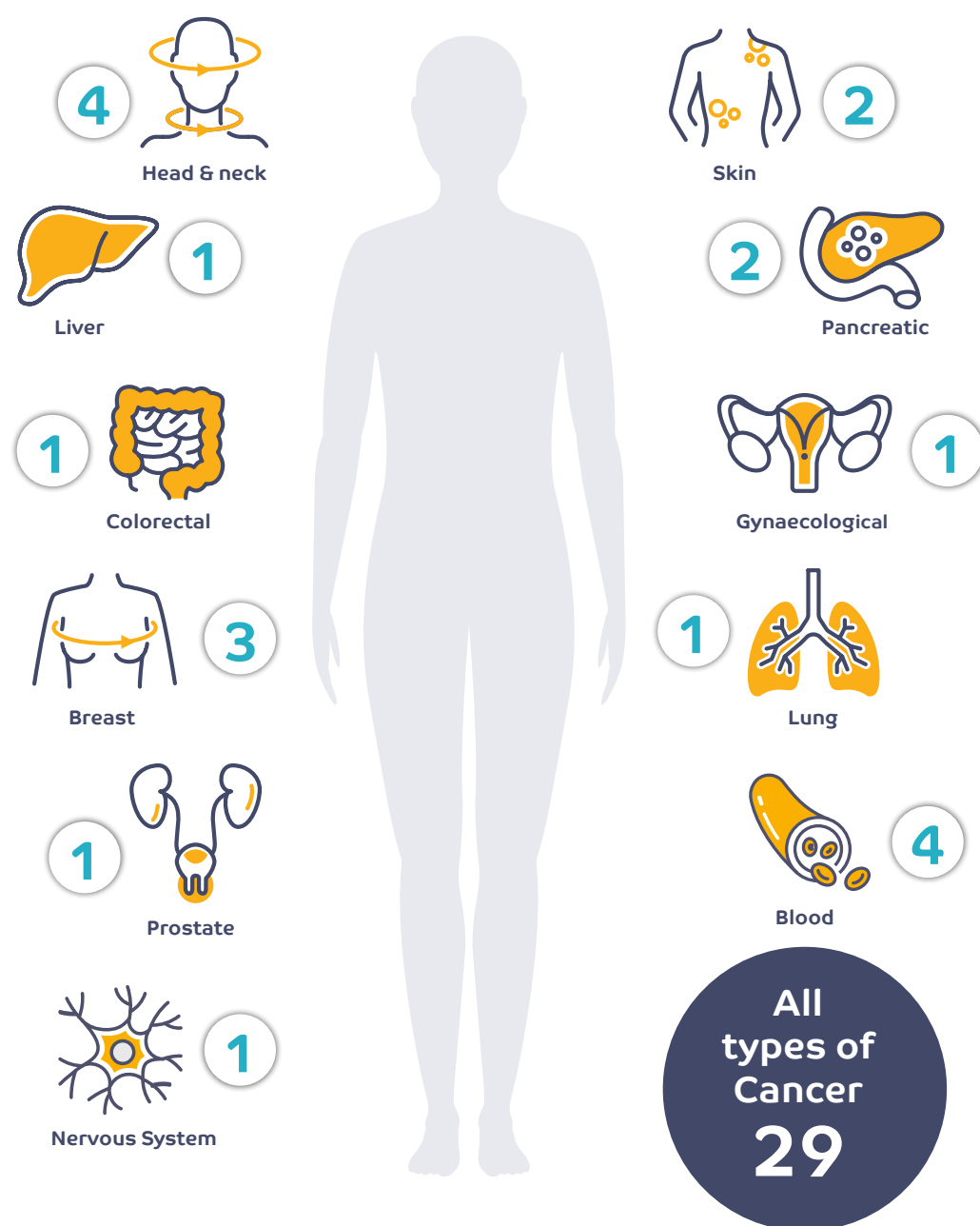
The partnership has also enabled us to share our experiences, knowledge and priorities for the cancer needs of our region.





# RESEARCH PROJECTS BY CANCER TYPE

Our research projects are working on multiple cancer types, ensuring we maximise the impact of our work across our community.



## CASE STUDY

### Sensing tension: Biodirectional feedback mechanisms controlling breast cancer invasion

Dr Morgan et al., £233,087/ 3 years

Breast cancer is the most common cancer in women in the North West and despite many advances in the treatment, it is still responsible for one in six female cancer deaths.

Triple-negative breast cancer (TNBC) is one of the most aggressive forms of breast cancer, with a high level of recurrence, metastasis and poor survival rates, with very few targeted therapies. Understanding the mechanisms of this cancer is essential in order to develop prognostic and patient stratification tools, and to create novel treatments.

This project will explore the processes that control TNBC growth and analyse whether this can predict the severity and likely response of patients to treatment. The stiffness of the tissue that surrounds breast cancer predicts a worse prognosis and rather than acting as a barrier that slows down invasion by tumour cells, stiff tissue acts to increase their invasiveness.

As a result of this, when the cells break through the barrier, they are much more aggressive and likely to form secondary cancers. However, at present we do not understand how this happens and so it cannot be prevented.

The researchers will study the processes which control breast cancer growth and analyse whether this can predict patient response to treatment. Hopefully, this knowledge will also help identify new drug targets and understand when different therapies will be effective in controlling breast cancer growth.







# CURRENT FUNDING

## LANCASHIRE AND CUMBRIA

### Summer Studentships at the Division of Biomedical and Life Sciences

Dr. Allinson  
£15,600 /2 years covering 2020 & 2021

### Development of mouse tail skin as a translational preclinical model for UV exposure and early melanomagenesis

Dr Mort, Dr Allinson  
£251,263 /3 years

### How does p53 link DNA damage signalling to innate immunity?

Dr Unterholzner £203,400 /3 years

### The role of NSMCE2-dependent SUMO modification in the replication stress response

Dr Elaine Taylor, Dr Mick Urbaniak  
£199,908 /3 years

### Living Well During and Beyond Treatment for Gynaecological Cancer: Exploring the Lived Experiences of Patients Undergoing Treatment for Gynaecological Cancer

Dr Lisa Anne Ashmore, Daniel Hutton, Dr Lynda Appleton, Dr Vicky Singleton, Dr Karen Whitmarsh, Janet Johnson £118,787 /2 years

### Funding for a Lecturer and Fellow in cancer research with x 2 PhD students

The funding provides support for the appointment of a Lecturer in Cancer research, along with a Fellow, two PhD students and lab-costs for 5-years. It has been match-funded by Lancaster University.  
£441,296 /5 years

### Small molecule induced degradation of centrosome clustering proteins: development of a novel, cancer-specific therapeutic approach

Dr Morgan Gadd, Dr Andrew Fielding  
£232,696.52 /3 years

### Analysis of an RNA export factor required for cell division and maintenance of genome stability

Dr Elaine Taylor & Howard Lindsay  
£231,271 /3 years

### Analysis of the role of ClZ1 in maintenance of genome stability and recovery from DNA replication stress

Dr Nikki Copeland, Dr Chris Staples, Dr Jason Parsons  
£257,081 /3 years

### PhD studentship: Understanding how cells regulate DNA replication to maintain genome stability

Dr N Copeland (Supervisor) Freya Ferguson (Student),  
£105,500.00 /3 years

### PhD studentship: How is the immune system alerted to replication stress and DNA damage in keratinocytes during immunosurveillance against cutaneous squamous cell carcinoma?

Dr Leonie Unterholzner (Supervisor), Jemma Creamer (Student),  
£105,500 /3 years

### Early predictive detection method for lung cancer via vibrational spectroscopy of liquid biopsy

Dr Danielle Bury, Francis Martin, Tarek Saba, Thomas Bongers, Camilo de Lelis Medeiros de Morais  
£129,054.82 /3 years

## NORTH WALES & CHESHIRE

### Autophagy dependent survival following Mec1ATM/ATR inactivation

Dr Cha  
£196,116 /3 years

### KESS2 Studentship Funding

Funding for four MRes students for 2018/19 along with two PhD students. £97,500 /3 years

### KESS2 Studentship Funding

KESS2 NWCR Institute Bangor University MRes student program 2020/21. £27,000

### Patient centred benefit-risk assessment of treatment for colorectal liver metastases in North West England and North Wales.

Dr Emily Holmes, Professor Simon Gollins, Mr Stephen Fenwick, Mrs Louise Jones, Professor Dyfrig Hughes  
£67,301 /1 year

### Understanding barriers and enablers to use of primary care remote consulting for suspected cancer symptoms among vulnerable populations

Dr Julia Hiscock (Supervisor)  
– joint with Tenovus  
£75,000 /3 years

### Finding My Way UK: Adaptation and replication testing of the benefits of online psychological support for cancer survivors

Prof Nicholas Hulbert-Williams, Dr Lee Hulbert-Williams, Dr Lisa Beatty, Prof Bogda Koczwara, Dr Laura Ashley, Prof Neil Coulson, Dr Peter Hall, Prof Eila Watson, Mrs Sue Millington, Mr Richard Jackson  
£249,646/3 years



## MERSEYSIDE

### **Determining ibrutinib's potential to treat human leukaemia's – novel uses for an exciting new Bruton's tyrosine kinase (BTK) inhibitor**

Prof D MacEwan, Prof A Pettitt, Dr J Slupsky, Dr A O'Donnell  
£162,443 /3 years

### **Gene edited reversal of FLT3-ITD mutations in acute myeloid leukaemia and its effect on chemotherapy resistance**

Prof D J MacEwan, Prof R E Clarke  
£181,676 /3 years

### **Evaluation of novel combination drug protocols for neuroblastoma using advanced imaging in a chick embryo model**

Dr Violaine See, Professor Paul Losty  
£117,382 /2 years

### **Forcing angiogenesis: Transcriptional control by integrin-dependent mechanotransduction during angiogenesis**

Dr Mark Morgan, Dr Katarzyna Wolanska  
£224,182 /3 years

### **Towards the clinical positioning of a first selective DUB inhibitor**

Dr Sylvie Urbe, Prof Michael Clague, Dr Barry L Pizer, Dr Claire Heride  
£141,569 /2 years

### **Non-canonical protein phosphorylation in human cancer cells**

Prof Claire Eyers, Prof Pat Eyers, Dr Andrew Jones  
£229,675 /3years

### **Absolute quantitation of endogenous Ras isoform protein abundance: Does codon bias explain the predominance of KRAS mutations in cancer**

Prof Ian Prior  
£127,257 /2 years

### **Kinome profiling and mass cytometry as tools to detect rewiring of B cell receptor signalling in the malignant cells of chronic lymphocytic leukaemia patients taking ibrutinib**

Dr J Slupsky, Prof. I Prior  
£217,307 /3 years

### **Integrating biomarkers to stratify adjuvant chemotherapy in pancreatic cancer patients**

Dr William Greenhalf, Dr Dan Palmer, Dr Eithne Costello  
£193,220 /3 years

### **Characterisation of the tumour-immune microenvironment in metastatic uveal melanoma**

Prof Sarah Coupland, Dr Carlos Rogerio de Figueiredo  
£132,434 /2 years

### **Function of stroma-derived gas6 in pancreatic cancer progression and metastasis**

Dr Ainhoa Mielgo, Mr Robert Jones  
£114,450 /3 years

### **Improving the biological response of proton beam therapy in head and neck cancer**

Dr Jason Parsons  
£202,129 /3 years

### **Tribbles pseudokinases: Analysis of cancer-associated signalling mechanischristianms**

Prof Patrick Eyers, Dr Dominic Byrne, Prof Claire Eyers  
£221,262 /3 years

### **The role of the ERK5 signalling axis in BRAF inhibitor-resistant melanoma progression**

Dr Mike Cross, Dr Rowan Pritchard-Jones, Dr Cathy Tournier, Dr Emanuele Giurisato, Dr Harish Poptani, Prof Clare Eyers  
£229,883 /3 years

### **DUB on the Tracks: USP31, a new regulator of microtubule dynamics in cancer cells**

Professor Michael Clague, Professor Sylvia Urbe  
£128,850 /3 years

### **Sensing tension: Bidirectional feedback mechanisms controlling breast cancer invasion.**

Dr Mark Morgan, Dt Tobias Zech, Dr Dean Hammond, Asst. Professor Pere Roca-Cusachs, Louise Jones, Prof John Marshall.  
£233,087 /3 years

### **A prospective study of genomic landscape of brain metastasis secondary to breast cancer**

**utilising cell free DNA derived from cerebral spinal fluid** Investigators  
Prof Carlo Palmieri, Prof Janet Brown, Dr Vinton Wai Tung Cheng, Dr Ellen Copson, Dr Athina Giannoudis, Mr Michael Jenkinson, Mr Richard Jackson, Dr Iain MacPherson, Prof Jacqui Shaw, Mrs Lesley Stephen  
£254,387.35 /3 years

### **“Imaging in the Window of Opportunity” Evaluating the role of advanced MRI techniques in detecting early response to immune checkpoint inhibition in a Head and Neck Cancer window of opportunity trial**

Mr Andrew Schache, Prof Harish Poptani, Dr Joe Sacco, Dr Rahcel Brooker, Ms Eftychia-Eirini Psarelli, Dr Kumar Das, Dr Maneesh Bhojak, Dr Rebecca Hanlon, Dr Gaurav Sundar  
£98,041.75 /18 months





**Intron retention and alternative polyadenylation control of LAMA3 in head and neck squamous cell carcinoma; mechanistic insight and potential drug target**

Dr K Hamil, Dr J Risk, Dr S Tew  
£188,511 / 3 years

**Pharmacological stimulation of NRF2 to enhance liver regeneration following tumour resection**

Dr I Copple, Professor C Goldring, Mr M Elmasry, Mr S Fenwick, Professor D Palmer, Professor K Park  
£199,417 / 2.5 years

**Validating candidate biomarkers for future use in pancreatic cancer detection amongst individuals with new-onset diabetes**

Professor E Costello-Goldring  
£171,343 / 2 years

**Exploiting the soluble isoform of immune checkpoint receptor CTLA-4 to improve the treatment of cancer**

Dr Lekh N Dahal, Professor Mark Cragg, Dr Joseph Slupsky, Professor Sir Munir Pirmohamed, Dr Frank Ward  
£248,333 / 3 years

**Investigation of volatile organic compounds to diagnose and stratify men with prostate cancer**

Professor Chris Probert, Professor Philip Cornford, Mr Henry Lazarowicz, Marta Garcia-Finana  
£299,991.92 / 3 years

**Head and neck cancer/radiobiology/ DNA damage and repair**

Gabrielle Grundy, Dr Jason Parsons  
£448,683 / 5 years

**Investigation the role of hypoxia on brain tumour cell division utilising in vivo Glioblastoma models**

Prof H Poptani (Supervisor), Clare Kelly (Student)  
£105,500 / 3 years

**PhD studentship: Insights into liver regeneration and novel strategies aimed at enhancing crucial hepatic repair**

Dr I Copple (Supervisor), Tobias Bunday (Student)  
£105,500 / 3 years

**PhD studentship: Function of cancer-associated fibrosis in regulating tumour immunity and response to immunotherapy**

Professor Michael Schmid (Supervisor), Nicole Simms (Student)  
£105,500 / 3 years

**PhD studentship: Defining and drugging the role of BAP1-mutation in the invasive behaviour of mesothelioma and uveal melanoma**

Professor Judy Coulson (Supervisor), Martina Tripari (Student)  
£105,500 / 3 years



**PhD studentship: Proteomics meets cancer therapeutics: Comprehensive analysis of cellular drug interactions in CML using mass spectrometry-based thermal proteomic profiling**

Professor Pat Eysers (Supervisor), Nefeli Boni-Kazantzidou (Student)  
£138,089.00 / 3 years

**PhD Studentships 2020/23**

**Three new PhD students started in October 2020:** Georgina Gregory (Supervisor: Dr Ian Copple), Georgia Guilbert (Supervisor: Professor Mike Clague / Professor Sylvie Urbe) and Lauryn Buckley-Benbow (Supervisor: Dr Morgan Gadd / Dr Sarah Allinson / Dr Jason Parsons).





# CASE STUDY

Living well during and beyond treatment for gynaecological cancer: Exploring the lived experiences of patients undergoing treatment for gynaecological cancer

Dr Ashmore et al., £118,787/ 3 years

Women undergoing radiotherapy for gynaecological cancer can experience psychosocial and physical symptoms that impact, in particular, on their sexuality and mental health.

Over half of women treated with radiotherapy for gynaecological cancer still experience decreased sexual function 14 weeks after the completion of their treatment. A lot worry about the status of their sex life and, whilst the literature acknowledges that support is necessary for all women following treatment, the focus is frequently on developing technological treatment techniques, rather than on information and support.

This project will explore how patients experience radiotherapy for gynaecological cancer using interviews and diaries from the start of treatment to six months after treatment has finished.

Specifically, this will focus on:



Coping with radiotherapy



Expectations of radiotherapy

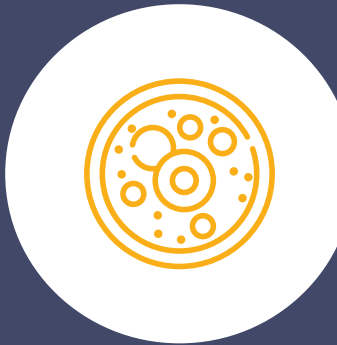


Levels of support needed

The narratives will be shared via a website and, at the end of the project, a book will be published on be shared with other patients with gynaecological cancer.

The impacts of the project will be far reaching and will support patients and families to build on positive strategies used by others as well as helping to identify ways to overcome barriers preventing healthcare professionals and people with cancer having the right conversations about treatment demands at the right time.

We continue to strive to meet the cancer needs of our region.



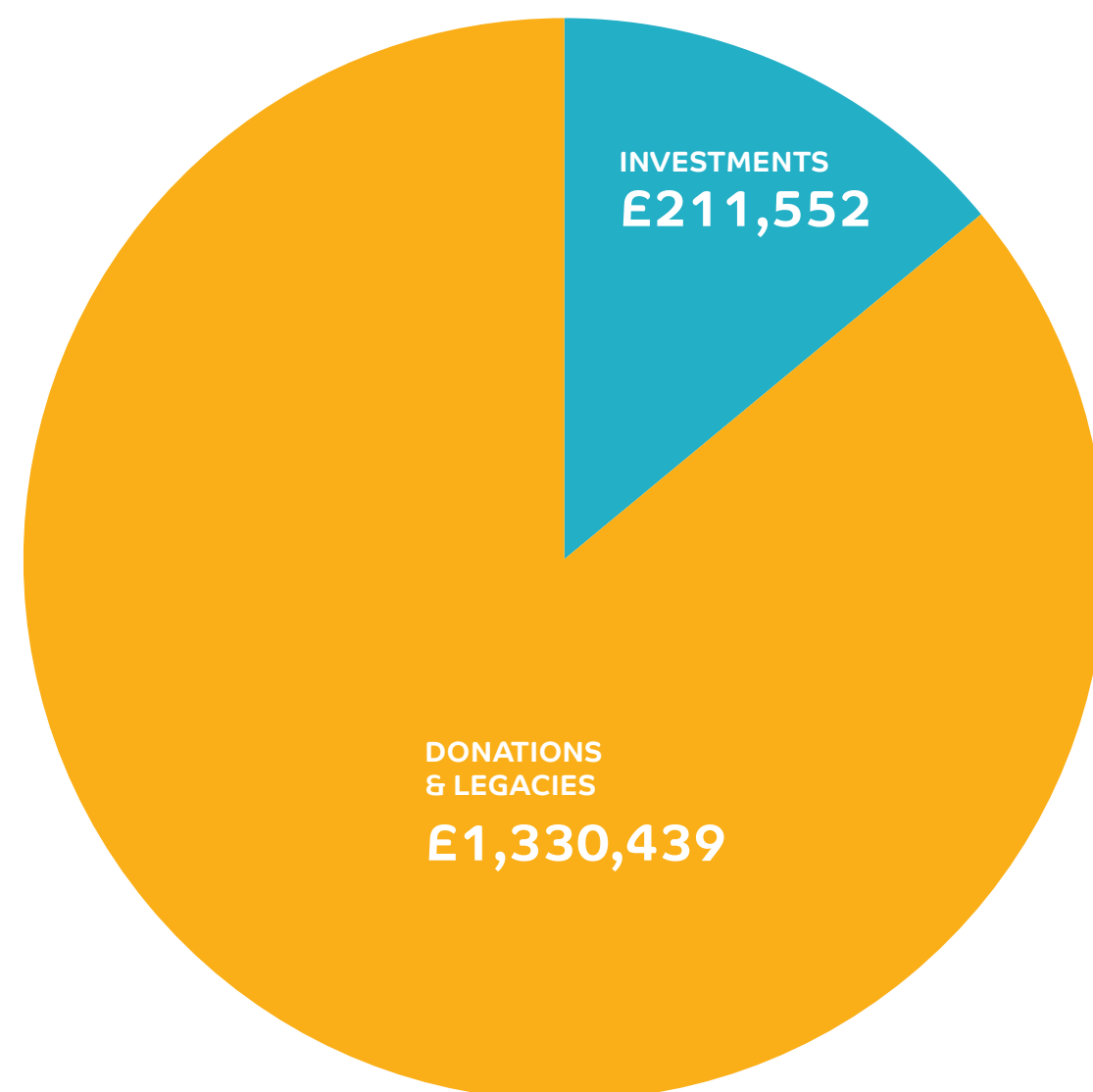




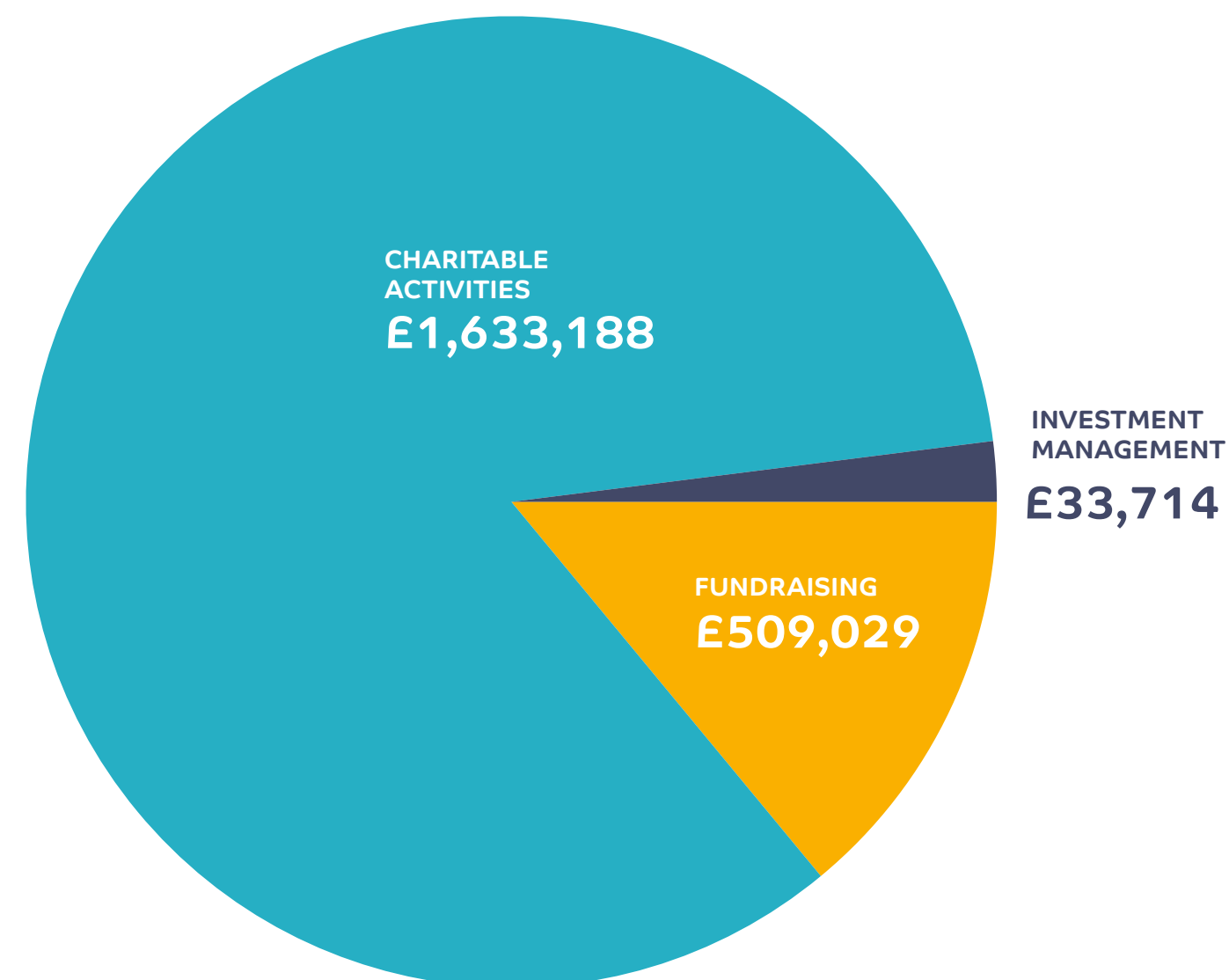
## FINANCIAL SUMMARY 2019-2020

This summary on pages 24-27 gives an overview of how we have performed during the financial year ending 30 September 2020. The full Annual Report and Financial Statements are available from the North West Cancer Research office or the Charity Commission website.

### INCOME



### EXPENDITURE



# CONSOLIDATED STATEMENT OF FINANCIAL ACTIVITIES

FOR THE YEAR ENDED 30 SEPTEMBER 2020

	Unrestricted and total funds 2020	Unrestricted and total funds 2020	Total funds 2020	Total funds 2019
<b>INCOME FROM:</b>				
Donations and legacies	1,327,439	3,000	1,330,439	1,389,300
Investment income	211,552	-	211,552	410,955
<b>TOTAL INCOME</b>	<b>1,538,991</b>	<b>3,000</b>	<b>1,541,991</b>	<b>1,800,255</b>
<b>EXPENDITURE ON:</b>				
<b>Raising funds:</b>				
Fundraising and legacy generation costs	509,029	-	509,029	670,520
Investment management	33,714	-	33,714	48,309
Charitable activities	1,629,963	3,225	1,633,188	3,104,952
<b>TOTAL EXPENDITURE</b>	<b>2,172,706</b>	<b>3,225</b>	<b>2,175,931</b>	<b>3,823,781</b>
<b>NET EXPENDITURE BEFORE INVESTMENT GAINS</b>	(633,715)	(225)	(633,940)	(2,023,526)
(Losses)/Gains on investments	(234,701)	-	(234,701)	93,325
<b>NET EXPENDITURE BEFORE TRANSFERS</b>	(868,416)	(225)	(868,641)	(1,930,201)
Transfers between funds	-	-	-	-
<b>NET MOVEMENT IN FUNDS</b>	(868,416)	(225)	(868,641)	(1,930,201)
<b>RECONCILIATION OF FUNDS:</b>				
Total funds brought forward	4,276,004	3,559	4,279,563	6,209,764
<b>TOTAL FUNDS CARRIED FORWARD</b>	<b>3,407,588</b>	<b>3,334</b>	<b>3,410,922</b>	<b>4,279,563</b>

# CONSOLIDATED BALANCE SHEET

FOR THE YEAR ENDED 30 SEPTEMBER 2020

	Total funds 2020	Total funds 2019
<b>FIXED ASSETS</b>		
Tangible assets	5,917	7,568
Investments	9,423,465	10,132,177
	<b>9,429,382</b>	<b>10,139,745</b>
<b>CURRENT ASSETS</b>		
Stocks	17,126	10,142
Debtors	679,710	676,672
Cash at bank and in hand	727,250	295,214
	<b>1,424,086</b>	<b>982,028</b>
<b>CREDITORS: amounts falling due in less than one year</b>	<b>(4,934,713)</b>	<b>(3,484,225)</b>
<b>NET CURRENT LIABILITIES</b>	<b>(3,510,627)</b>	<b>(2,502,198)</b>
<b>TOTAL ASSETS LESS CURRENT LIABILITIES</b>	<b>5,918,755</b>	<b>7,637,547</b>
<b>CREDITORS: amounts falling due after more than one year</b>	<b>(2,507,833)</b>	<b>(3,357,985)</b>
<b>NET ASSETS</b>	<b>3,410,922</b>	<b>4,279,563</b>
<b>CHARITY FUNDS</b>		
Restricted funds	3,334	3,559
Unrestricted funds	3,407,588	4,276,004
<b>TOTAL FUNDS</b>	<b>3,410,922</b>	<b>4,279,563</b>



# TRUSTEES, ADVISORS AND PATRONS

## Trustees and officers of the Board

**Mr N S Lanceley FCA, DL**  
Chairman and Chair of the  
Nominations Committee

**Mrs F Street**  
Vice Chair

**Mrs H Atherton**  
Chair of the Marketing and Fundraising  
Committee

**Mrs C Bond CPFA**  
Honorary Treasurer

**Mr M Haig**

**Miss C Jones BA, ACIS**  
Chair of the Investment Committee

**Mrs M Owen**  
Resigned 15 October 2019

**Dr P Robertshaw PhD, Dip DM**

**Prof D R Sibson PhD, BSc**  
Resigned 25 March 2020

**Mr S Claus LLB**

**Mr P Webster**  
Appointed 10 February 2020

**Mr M Ore**  
Appointed 10 February 2020

**Dr S Kothari**  
Appointed 10 February 2020

**Dr M Carter**  
Appointed 10 February 2020

## Patrons

**The Most Reverend John Davies**  
The Archbishop of Wales

**The Most Reverend Malcolm McMahon**  
The Archbishop of Liverpool

**The Right Reverend Mark Tanner**  
The Lord Bishop of Chester

**The Right Reverend Paul Bayes**  
The Bishop of Liverpool

**The Right Reverend Gregory Cameron**  
The Bishop of St Asaph

**The Right Reverend Peter Eagles**  
The Bishop of Sodor and Man

**The Right Reverend Beverley Mason**  
The Bishop of Warrington

**Edmond Seymour Bailey**  
Lord Lieutenant of Gwynedd

**Mrs Tia Jones**  
Lord Lieutenant of Powys

**Mark Blundell**  
Lord Lieutenant of Merseyside

**Prof Dame Janet Beer**  
The Vice Chancellor,  
The University of Liverpool

**Prof Ian Campbell**  
The Vice Chancellor,  
Liverpool John Moores University

**Dr Steve Ryan**  
The President of the Liverpool Medical  
Institution

**The Most Honourable Charles Paget**  
The Marquess of Anglesey

**The Most Honourable  
David Cholmondeley**  
The Marquess of Cholmondeley

**Lord Mostyn**  
**Dame Lorna Muirhead DBE**  
**Henry Bowring**  
**Michael Potts FCA, DL**

## Independent Auditors

**Crowe U.K. LLP**  
The Lexicon, Mount Street,  
Manchester M2 5NT

## Bankers

**NatWest**  
247 High Street, Bangor,  
Gwynedd LL57 1RW

## Solicitors

**Brabners LLP**  
Horton House, Exchange Flags,  
Liverpool L3 9QJ

## Investment Managers

**Investec Wealth and Investment Ltd**  
The Plaza, Old Hall Street, Liverpool  
L3 9AB

## With Thanks

**Charles Botherton Trust**  
**Elda Latin Charitable Trust**  
**Geoffrey Boston**  
**Groundwork UK**  
**Liverpool Charity &  
Volunteer Services**  
**Sir Donald and Lady Edna Wilspon  
Charitable Trust**  
**The Hobson Charity Limited**  
**The LA Jones Charitable Trust**  
**The Pennycress Trust**  
**The Red Rose Charitable Trust**  
**The Robert & Evelyn Maud Hall  
Charitable Trust**

