



# Putting our region's cancer needs first

2018-2019  
Annual Report

## Our year in numbers

Invested in life-saving research

£2.7m



51

World-class projects currently funded

People directly engaged as part of our cancer prevention work

12,500



18

Fundraising Committees working hard in their communities

Supporters jumping from 11,000 feet to support North West Cancer Research

23



6,250

Miles cycled, run, swum and canoed by our intrepid supporters – or enough to get from Liverpool to Hong Kong!

School children raised the roof and sang to support research.

200



2,650

Unique donors contributed to NWCR's vital work

## Contents

Who We are	Pg 05
Chairman's Report	Pg 06
CEO's Report	Pg 08
Committees	Pg 10
Fundraising and Engagement	Pg 24
Research Report	Pg 30
Research Report Case Studies	Pg 34
What We Currently Fund	Pg 39
Financial Summary	Pg 46
Statement of Financial Activities	Pg 48
Balance Sheet	Pg 49
Thank you to our funders	Pg 50
Trustees, Advisors and Patrons	Pg 51





Putting our  
region's  
cancer  
needs first





## Who We Are

We are an independent charity dedicated to putting our region's cancer needs first, funding pioneering research to tackle the cause, improve the care and find the cure for cancer. We focus on the types of cancer that affect people living across North West England and North Wales the most.

Living in the North West, we are 25% more likely to be diagnosed with cancer than elsewhere in the UK.

From leading life-saving research projects to bringing better and kinder treatments to those who need it most, the people living in our region are at the heart of everything we do.

But, none of this would be possible without the dedication of our supporters, who work hand-in-hand with us to achieve a cancer-free future.

Together, we  
can make a  
cancer-free  
future.



## Chairman's Report



**Nigel Lanceley, Chairman**

---

At the risk of repeating myself, the year covered by this report continues to be a challenge and one in which uncertainty prevails. This uncertainty is a result of political changes but hopefully this will begin to reduce in the near future.

Despite the uncertainty, I believe that the Charity is well placed going forward and we are now in a position of concentrating on growing our supporter base. Much work has been undertaken to create a new brand and I am hopeful that this will make a positive impact on our profile across the region. In addition, a very insightful report has been produced on the specific cancers which affect our region.

The report highlights the most prevalent cancers which vary from area to area within the North West and North Wales and provides important information for our

communities, committees and for our stakeholders. The report will also help to focus our investment on the areas of most need within our region.

I am pleased to report that the Charity has a very good team in place and although there have been changes, the new members of staff will help in achieving our strategic objectives. Alastair Richards, our Chief Executive, has led the team well and has been active in promoting the Charity and forging new partnerships for the benefit of the region.




We continue to expand our research portfolio and are delighted to welcome Chester University to the North West Cancer Research family. We look forward to working with them going forward.

North West Cancer Research continues to receive great support from the scientific community. This comes not only from our own funded

researchers, but also from the scientists who form our Scientific Committee. Our processes for approving funding are rigorous and I thank those involved for their valuable contribution. I would also like to thank the young scientists we support for their hard work and dedication, I look forward to following their careers with interest.

Our challenge remains to raise the funds needed to enable us to achieve our mission. In addition, support for early detection and lifestyle issues continue to be important for the Charity and our communities.

My message to our committees, supporters, businesses and the wider public is to join with us to achieve a cancer-free future for the region.



**We continue to approve only the very best world-class research.**

## CEO's Report



**Alastair Richards, CEO**

---

It has once again been a year of change and we are pleased to have made progress despite a challenging and uncertain environment.

However, as a regional charity which is focused on funding research we have found fresh impetus through looking at some of the data around cancer in our region. Rising levels of cancer nationally have led to the now well-known statistic that one in two people will be affected by cancer in their life-time. Our 'Breaking the Patterns' regional report, which we produced in January 2020, highlighted the many differences which exist within our towns, cities and rural communities and which lead to different cancers being more prevalent than we expect.

What is self-evident is that cancer patterns in our region depend upon the genetic factors which exist everywhere, but also on the local environment and the life-style factors which we hear so much about.



This creates a complex web of different cancer types and levels which mark out Merseyside from Marple and Cumbria from Conwy.

Some of the statistics we have found are quite shocking. Liver cancer rates in Merseyside are twice the national average. Rates of bladder cancer are 76% higher than we would expect in Conwy and incidences of cervical cancer in Gwynedd were 93% higher than the rest of Wales. These statistics only scratch the surface of what we need to learn about cancer in our region. We recognise that for every difference in cancer prevalence, there will also be differences in outcomes as people have varying levels of access to information around health conditions, take time to access health services and will respond to treatments differently.

As North West Cancer Research, we will continue to focus on funding pioneering research to tackle the cause, improve the care and find the cure for cancer. In order to make the best use of the

limited funds we have, we need to only select research of the highest standards which will have an impact for people in our region.

During the last year, we have opened up funding for some different types of research, while still continuing to fund essential work which examines the complex genetic factors behind many cancers. As a result, we have chosen our first projects in health service environments – seeking to improve patient care and outcomes and aiming to improve treatments in the near future.

In 2020 we will also select our first projects which specifically study the cancer patterns in unique communities in the North West. These studies, along with the work which we have funded in the past, are all aimed at breaking the cancer patterns we see in our region today.

In order to do all of this, we are reliant upon our kind supporters and donors. We are indebted to them for their support and the way in which they continue to give. We thank each one of them individually for their commitment to the battle against cancer in our area. It has been a real privilege to meet so many people who share a common purpose and who are willing to give up their time and money to make things happen.

I know that with your help and support North West Cancer Research will continue to grow and fund more ground-breaking work which will create a better future for people in our region and beyond.

**With your help  
and support  
North West  
Cancer Research  
will continue  
to grow.**





Committees,  
Fundraising and  
Engagement.





## Aughton

It's been another busy year for the Aughton Committee. We held our Christmas Coffee morning in November at the W.I. Hut. There was a reasonable amount of our supporters attending and all seemed to enjoy the morning.

A group playing ukuleles entertained us all with some Christmas renditions plus other popular tunes, which made the morning very festive and our supporters certainly enjoyed the music in the background. A grand total of £631.90 was raised.

We had a flower arranging demonstration in the WI hut in April which was held in the afternoon. It was a very lovely way to spend an afternoon and we raised £262.79. The lady giving the demonstration donated the flowers she provided and we in turn gave two smaller arrangements to two of our committee members who have recently had health problems.

We decided to try something different to raise funds, so organised a bingo evening which was held in July in Aughton Institute. The event drew a good attendance and the evening was enjoyed by

all, raised a few laughs and had a great atmosphere as the supporters were winning great prizes.

The amount raised was £201 and we hope to do it again at some stage in the near future. In September, we held a 'Fun Afternoon' in the W.I. Hut.

There was fun to be had and our supporters appeared to enjoy the quizzes and games we supplied to each table. There was a small prize for each quiz or game won on each table. We managed to raise £373.90 for this event and will certainly hold another 'Fun Afternoon' in the future.

## Black Jack and Bow Tie

The Black Jack & Bow Tie Committee have had a busy year again in what can only be described as challenging times!

The Committee have all found this year a bit of a struggle with regard to our fundraising events which, we're sure, is something that all volunteers

are finding. That said, we continue to have a very strong core of supporters and with their help we have managed to raise several thousand pounds with some varied events, such as a race night which was good fun and proved popular, another fun day and a couple of charity bowls matches.

We finished the year with our New Year's Eve party.

This was a first for us and we would like to give special thanks to Sean Higgins aka 'Sean the Hat' for his amazing contribution in providing the entertainment for hours of fun.

We remain committed to NWCR and the all-important work they do. We have reached our 13th year and are looking forward to developing more fun events.

## Frodsham

The Committee's main fundraising events during this period were the Spring and Autumn lunches. The lunches, which were held in Frodsham Community Centre, again proved popular and tickets were in demand. Over a hundred people joined us for a tasty lunch with salads and a mouth-watering selection of desserts prepared by our hardworking Committee. Our loyal supporters enjoyed a glass of wine or a soft drink with their lunch followed by a hot drink. We also had a card sales table and a raffle. We raised a fantastic £2,400 at the Autumn Lunch and a further £1,550 at the Spring Lunch.

The Committee appreciated the help and support given to us at these events by husbands, partners and friends. Their help collecting orders on the day, preparing food, serving wine and setting up and clearing up at the end is invaluable and we welcome their contribution and ideas.

In November, we held our pre-Christmas coffee morning in the Parish Hall. It was market

day in Frodsham, so we were able to provide a welcome break for shoppers and visitors. People enjoyed a hot drink and biscuits and were able to browse the various tables which included a cake and preserves stall, a raffle, a Christmas themed stall and a card sales table. The sale of cards through table sales at events continues to be a lucrative source of funding for us. We would like to thank Mary Dudson for her hard work on this event.

On a cold December evening a group of NWCR elves joined the Rotary Santa float on one of their street collections. We had an enjoyable evening knocking on doors and watching excited children and some adults talking to Santa! In January, we were invited along to Frodsham and Helsby Rotary club meeting and presented with a cheque for £250.

We were delighted that two of our members, Chris Berry and Barbara Mottershead, were nominated for an award in the North West Cancer Research 70th celebrations. Chris and Barbara joined the committee in the 70s. Barbara served as

treasurer for over 30 years and Chris has taken on the role of Chairperson at various times.

Mary Evans, who joined the Committee in 1996, sadly resigned due to ill-health. We would like to thank her for all her hard work in supporting the lunches and organising our Christmas stall at the coffee morning. Mary still supports us by selling tickets. We were saddened to hear of the death of one of our members Val Williams. Val supported us at the lunches and coffee morning and had offered to support our Chairman in her role. Val's family generously gave a share of the donations from the funeral to North West Cancer Research. We are pleased that her husband Derek still supports us at our events.

Many thanks to our hard-working members, helpers and supporters who have all assisted in making the lunches and coffee morning successful in raising funds for North West Cancer Research. We are hoping to recruit some more volunteers onto our Committee to help run the events in the next year.



## Harlech

It has been a quiet year for the Harlech Committee and owing to the ill health of some Committee members and their families, we have not undertaken as much fundraising activity as we would have liked. We were honoured to receive a number of donations in memory of loved ones from our local community and this, along with some smaller donations and card sales, has meant that we were able to raise £3,700.

## Holywell

We started our 2018 /19 fundraising year in November, with the switching on of the Xmas Lights in Holywell, a new venture for us. We had a stall selling doughnuts, sweets and soft drinks as well as carrying out a street collection. The weather unfortunately did not help as it was cold and rainy and so the event was not as successful as we had hoped, although it was enjoyable.

Throughout November, December and January, the Committee and friends took part in Charity Quiz nights hosted at our local pub, The Druids Inn, Gorsedd. We raised money from the raffle and entry fees and we'd like to say a big thank you to The Druids Inn for their support.

March saw us once again holding our Ladies Lunch at The Stamford Gate Holywell, with over 100 ladies attending and once again proving a successful fundraising event. This year, our speaker was Mo Shirley Whiteway and her talk focused on how African gardens are enabling the women of Africa to cultivate their patch of



**We all recognise  
that the face of the  
Charity is changing,  
looking to a bright  
and forward  
thinking future**

garden to produce crops which they use for the family as well as selling the extra at the market to give them a small income for any family.

In June, we decided to hold a Midsummer Supper. We wanted to recreate The Cancer Supper of old that previous committees had held very successfully, so we asked our local butcher to supply us with cold meats and the Committee then made all the salads etc to go with them. We also had homemade sweets and asked our guests to bring along their own drinks. The entertainment we had was provided by a local vicar from Bangor who became Elvis Presley and wowed everyone with his singing and stories. It proved an event to repeat and a successful money raiser

Our annual Charity golf day followed at the end of July at Holywell Golf Club. Although it was not as well attended as in previous years, everyone who did attend enjoyed the golf day. We held a successful raffle on the day and our two eldest Committee members, Rose (93) and Joyce (94), did sterling work selling the raffle tickets. Our thanks go to both.

## Kelsall

Yet again we have had another busy year fundraising for North West Cancer Research.

We started in October with a new venture, a sponsored 'Pink Walk' in conjunction with the 'Pool of Life' from Liverpool. We had approximately 100 adults and children plus many dogs wearing pink, walking around our village. The weather was perfect and we finished off with refreshments of hot dogs and plenty of tea and cakes! Great community spirit was shown and raised £1,593 for each charity.

Later in October, we held one of our regular auction and jumble sales which were

once again well attended and added a further £700 to the cause.

November saw the village Beer Festival and we again joined forces with four other organisations from Kelsall. The festival is held over two evenings and local residents enjoyed sampling local ales and live entertainment. It was another good event raising a further £1,600.

In December, the Christmas Tree Festival was held at our local Methodist Church. We contributed to this by decorating a tree for North West Cancer Research, our theme being 'Hope'. There were sixteen trees altogether, all different making it a wonderful start to the Christmas period.

In March, we held another auction and jumble as they are always well attended, adding a further £800 to the fund.

May is our main event, our Charity Gala, with a football competition, demonstrations, craft stalls, display, games, BBQ and the crowning of our May Queen and Rosebud Princess. We raised £2,000 on the day. A cheque for £6,000 was presented to Professor Ian Prior, a North West Cancer Research funded researcher.

This was our 41st year of fundraising and we are looking forward to another fun year of raising funds for this amazing cause.



## Llanfairfechan, Aber and Bangor

Yet again we have had a very busy year fundraising for North West Cancer Research and although we did not raise as much as in previous years, we are very grateful to everyone who has supported us during 2018/19.

It has been an added bonus for our Committee to see a Welsh community fundraiser joining the team at Head Office. Having someone who is truly bilingual has been great as she is able to ensure that our tickets and posters have been bilingual and she has attended most of our meetings!

In December, we held a Shine With Ali Fashion Show in Llanfairfechan. It was a very relaxed and enjoyable event, with a handful of our friends along with committee members, taking to the catwalk as models for the evening. A very successful evening raising over £500 and with plenty of requests for us to repeat the event next year.

In May, we held our annual PopUp Nearly New Shop and raised over £400.

Early June saw us welcoming visitors to Aber Open Gardens. Unfortunately the BBQ organised for the evening had to be postponed due to the inclement weather... but we still managed to raise over £600.

At the end of June one of our committee members very kindly opened her kitchen and garden for a fundraising brunch which raised over £300, the Committee was grateful to the local businesses who donated all the food for this event.

The postponed BBQ went ahead in early July and raised over £400, this time the weather was much kinder to us. Local artist Andrew Southall, donated one of his prints to help raise funds and having sold £400 of calendar dates, Alastair Richards was given the task of opening the envelope containing the secret date... our winner was thrilled with her prize!

During the year, we also had our usual supermarket collections and we are always surprised at the generosity of our local community.

Although it has been pleasing to welcome new members

to our Committee, this has been tinged with a great deal of sadness as our longest surviving member, Mrs Lilian Jones, very sadly passed away at the end of September. Lilian joined the Committee in 1977 and worked tirelessly to raise funds for North West Cancer Research.

The family asked for donations in her memory to be made to the Charity.

We celebrate our 70th anniversary next year and to recognise this achievement, the Committee along with a few of our friends, have organised a Gala Concert, in October.

We have secured the services of four choirs – one a very talented youth choir from Anglesey as well as three experienced male voice choirs and a female soloist.

As we approach our 70th year, we look forward to continuing the commitment and dedication shown in previous years. We will endeavour to make 2018/2019 a gala year for fundraising.

## Lunesdale

Supporters of North West Cancer Research in the Lune Valley have produced a year of successful and very varied fundraising events. We have sadly lost several of the original village groups but the remaining Committees work hard to build on past successes and introduce new events into their calendars.

The Sedbergh group continue with their twice yearly coffee mornings which are very much a part of community life and eagerly anticipated by locals and supporters.

The Mansergh group hosted a coffee morning, which again was well supported by the local community.

Also part of the local calendar are the Silverdale and Kirkby Lonsdale Christmas Fairs which are perennially popular and an excellent showcase for the North West Cancer Research Christmas cards.

In addition, the Kirkby Lonsdale group organised a play by a touring theatre company. 'Up, Up and Away' proved a great attraction and together with the sale of refreshments was an impressive fundraiser.

The Casterton group held an event in Kirkby Lonsdale, a 'Sale of Old Bags' - not, as

was suggested, a reflection of the local committee but an assortment of bags and accessories of every description!

Casterton held their annual plant sale, which is always a popular event and many local gardens must bear witness to the excellent plants on offer.

Flowers were also the main event at the Daffodil Day hosted at Whelprigg by kind invitation of Mr Henry Bowring. Inevitably at risk from the weather, it is nevertheless a most enjoyable day.

Henry Bowring again offered his support by acting as valuer at Tunstall's Antiques Evening. Tickets included the opportunity to bring an item for valuation and it proved an entertaining evening with plenty of audience participation.

The Warton group hosted a sumptuous Christmas tea and also their annual open garden event which is always a delightful occasion.

## Lydiate

The 13th Annual Lydiate Classic Car and Bike Show took place in July at Lydiate Parish Hall, Southport Road, with all proceeds going to North West Cancer Research.

On the day, there were charity stalls in the hall, including a cake stall, tombola and refreshments.

All classic cars and bikes were welcome, with the only criteria for joining in on the day being that you love your car/bike! It was a very easy-going day, very relaxed, with no prizes or awards - all cars/bikes are winners in their owners' eyes.

The original idea for the car show came from Shirley Brown who wanted to raise money to help beat cancer after the loss of her husband Ken to the disease. She suggested doing a charity sale and as her son Mike and two friends had classic and American cars, they decided to merge the two events together and the rest is history!

The show has raised over £25,000 pounds over the last seven years.

Apart from the show, we also run monthly attic sales at Ince Blundell Village Hall on a Tuesday Afternoon.





The annual  
Lydiate Classic  
Car and Bike  
Shows has raised  
over £25,000  
for NWCR







## Mold

---

Once again, the Mold committee have had lots of support from the community this year in addition to our own Committee efforts.

There have been several sporting challenges taking place. Emyr Gibson ran the London Marathon once again raising over £2,000 for North West Cancer Research and Alex Alexandrou ran a triathlon raising £500. Our own committee member Jane Price and her friend Linda Pimble walked a marathon in a day on Anglesey, bringing in an impressive £1,470.

Others chose to raise money by hosting their own fundraising events. Northop Hall Cricket Club have organised several events over the last few years in support of the Charity and this year they gave us nearly £2,000. Jean Williams opened her house and garden to host a coffee morning which, despite very nasty weather, people still turned out to show their support by donating £900.

Zillah Larson hosted an afternoon tea party on a beautiful sunny afternoon and raised £472 and Anwen and Gwilym Edwards once again hosted their annual coffee & mince pies

afternoon in support of North West Cancer Research, this year raising £670.

Supplementing the Mold Committee's regular coffee mornings and lunches, this year we held a Cheese & Wine Evening at Pentrehobyn Hall, Mold. We were lucky to have a beautiful summer evening and enjoyed a fun social event with live music.

Thanks to the support we receive, the Mold Committee was able to present North West Cancer Research with £22,500 to help with the research into Cancer cross our area.

We are pleased to say that Jones Price Greengrocers of Mold received highly commended in the Corporate Supporter award category for their support over the years. Then the Mold Committee were very surprised and thrilled to receive the President's Lifetime Achievement Award in recognition of our Committee's 65 years of fundraising. This award not only recognises the commitment shown by members past and present but also the support of the local businesses and residents in and around Mold. Without their support, we could not raise the money that we do.

## Machynlleth

---

The first event of the season was held in October, with our popular annual coffee morning which raised over £1,500 and was a very successful social event for the community. We attended a number of Christmas craft fairs in November and December to sell the North West Cancer Research Christmas cards and this raised over £360.

Members were busy in August with another of our annual events in Machynlleth, the street collection, where we managed to raise £758. The Committee is very grateful to

member Mrs Margaret Evans and her friend Liz Tomlinson who held several whist drives in the neighbouring village of Corris during the year and raised the amazing amount of £1,160.

Money was also received from an office cake stall, a donation in memory of a local lady, carol singing by a Welsh learners group and a local craftsman who decided to have a collection box on his stall during the Craft Fairs he attended.

We were very pleased to transfer £4,500 to Head Office this year and appreciate all the support we have had as a Committee. The officials wish to thank all the members for their effort and dedication during the year.

## Ruthin

---

The Ruthin Committee had a bumper year at their events.

In November, the Christmas Fair was held at Llys Erw Community Centre and was very well attended, raising £535. A week later, a stall was taken by the Ruthin Committee at the Christmas Fair held at St Peters Church selling Christmas Cards and Bric-a-Brac which raised £230.

In March, a Soup, Cheese and Biscuit Lunch was held at Llys Erw Community Centre which was well attended and raised £421. This was

followed in May by a flower arranging evening which was organised at Ruthin Rugby Club and featured Diane Molesdale as the guest flower arranger. It was a really enjoyable evening and raised £377. Pleasingly, this is an extremely popular event in our calendar which grows larger year on year.

In July, we held a Strawberry Scone Tea at Llys Erw Community Centre, with Tesco having donated the strawberries. The afternoon raised £495. Our final event in the financial year was held in September at Llys Erw Community Centre and was a coffee morning which raised £369.

All in all quite a lucrative year!

## South Cheshire

---

Although it has been a relatively quiet 12 months, we held a lovely Christmas Carol Service at the Ancient Cholmondeley Chapel on Cholmondeley Estate.

The late Lady Cholmondeley was our Patron and James Hall, the estate manager, helped us organise the event as he has a fantastic choir. The service featured readings, beautiful music, a junior choir and a full house! We served mulled wine and mince pies after the service. It was a lovely Carol Service and everybody enjoyed it. The event raised £1,000.

We hope to hold more events next year.







None of this  
would be  
possible without  
the dedication of  
our supporters





## Southport

We have had an amazing year, raising record amounts for North West Cancer Research and culminating with recognition for all the work we as a Committee do, here in Southport. We all recognise that the face of the Charity is changing, looking to a bright and forward thinking future, for both researchers, and Committees such as ourselves. We are committed to ensure the monies we raise go into research, which has always been the heart of our Committee and our reason for the fundraising we do.

Our busy calendar featured a luncheon at Southport and Ainsdale Golf Club, Cheese, Wine and Call my Bluff evening, Summer Sparkle, Afternoon Tea, Bollywood night, Rock Choir and Christmas coffee and a mince pie morning!

I have to thank each and every member of our committee,

without exception, for helping to organise the numerous events we hold throughout the year. The events couldn't happen without their support and help, from selling raffle tickets, supplying raffle prizes, manning stalls, selling tickets to our events, and generally helping at the events. Special thanks to our treasurer, Sandra, who keeps our finances in good order, not an easy job, but one she does so well. I also have to thank Val Donaldson, for the minutes after each meeting, ably supported by Mel Tarplee. Special thanks to Val Charlesworth for organising our very successful Bollywood night, a fabulous evening.

Grateful thanks to Jackie Jaeger for her baking skills, and helping with our knitting projects! My thanks to my Committee are endless.

Barclaycard were very generous to us giving £ for £ matching and helping us to

double the monies we raised for our raffles.

We were sorry to receive the resignation of Mary Lomax from our Committee, who over the years has raised several thousands of pounds for the luncheon club which she organised, she will be sorely missed.

Betty Robinson, a long standing member, left the area to live near her family, sadly, she has since died and we remember her with great affection. This was certainly a sad time for us, as we were still reeling from the untimely death of Carole Owens. A lovely lady, and active member of our committee.

I visit our Southport President, Joan Pettit, on a regular basis, a lovely lady, fast approaching her 98th birthday. It is an honour to be chair of the Southport committee, I know that our 2019/20 fundraising will be another fantastic year.

## Tywyn and district

Our dedicated and hard working Committee began their fundraising during November at the United Charities Fair held at Aberdyfi. This was organised by Mrs Meiriona Davies and family and raised £586 for our Committee, including a generous donation of £100 from Aberdyfi Community Council - we thank them for their support.

The sale of North West Cancer Research Christmas

cards raised £108 for our Committee, as well as our Annual Flag Day collection on Easter Monday collecting £371.

Our two annual coffee mornings raised £1,890 as well as £394 donated by local singing group, 'REVIVAL' who produced a CD of their popular songs for us to sell. Local supporters attend our coffee mornings just to listen to the band!

Altogether we were pleased to send £3,860 to Head

Office. We are aiming to increase our donations in the future and we are very grateful for the support of the new North Wales Fundraising Officer.

Diolchwn i Ffion am ei chefnogaeth a'i brwdfrydedd-mae dros hanner y Pwyllgor yn Gymru Cymraeg felly mae'n hanfodol fod yr elusen yn cydnabod hyn. Diolch i aelodau 'r Pwyllgor am eu cyfraniad dros y blynyddoedd Daliwch ati.

## Wirral Bazaar

Over 3,500 visitors got into the Christmas spirit at the annual Wirral Bazaar, a new record for the event.

The two-day event, held at Thornton Manor, raised an incredible £41,000 for life-saving cancer research projects in the North West and North Wales.

With over 70 handpicked stalls, from the Wirral and all over the UK, offering unique and beautiful Christmas gifts, as well as food and drink products not found on the high street, it was the perfect opportunity for visitors to kick start their Christmas shopping or treat themselves.

Stalls donated 10% of their takings, giving shoppers the unique opportunity to donate to charity whilst doing their Christmas shopping.

In addition, the £4 entry fee and profits from catering went directly to North West Cancer Research. By simply attending Wirral Bazaar, visitors made a huge difference to our mission of a cancer-free future.

Visitors indulged in prosecco, kindly donated by Majestic West Kirby, whilst enjoying entertainment from SingMe Merseyside, Birkenhead School Chamber Choir, Off Pitch, and the Bazaar's resident saxophonist Dick Neal, as they made their way round the marquee, or stopped for a cup of tea. Chair of the Wirral Bazaar committee, Kate Williams, said "We were absolutely thrilled to be able to present NWCR with a cheque for a fabulous sum of £41,000 raised at our Bazaar in November.

"The atmosphere was so happy - it was wonderful to

welcome so many visitors through the doors and to see the full shopping bags heading out.

"Our thanks go to our sponsors The Mitchell Group and Investec Wealth & Investment, and to our other supporters, donors and the businesses who took adverts in our Fair Guide. Whilst the Committee works hard all year to pull the Bazaar together, it's not possible to put it on without the help of our friends and huge army of volunteers who support the Committee, so a big thank you to them.

"All the hard work over the year is worth it when we know that we can enable North West Cancer Research to continue its work."

Over the past 29 years, the Wirral Bazaar has raised over £410,000 for cancer research in the region.

## Wrexham

It was a very quiet year for the Wrexham branch this year, banking just short of £600 but we are hoping that 2019/2020 will be more productive for fundraising.

With only three of us in the Committee, it can be difficult to come up with new ideas to fundraise. We did however have a very successful fundraising concert held at our local St Margaret's church in September which

was entitled "La La to Gaga". Our Branch Secretary and Treasurer, both very accomplished pianists, played duets and organ pieces followed by songs from the hit film La La Land which went down very well with the audience. This concert was postponed from March due to the heavy snow we experienced. The concert itself raised £354.

We received a donation of £162 from Wrexham's Inner Wheel and other funds raised

were from holding a 'Strictly Come Dancing' sweepstake which is an annual event in work. A generous colleague, Sue Walls makes beautiful handmade cards as a hobby and donates all the proceeds to the Charity over the year.

So although we have not had many large donations this past year we remain committed to raising much needed funds for the Charity and already have some plans in place for the coming year.

## Cancer researchers pedal up £25,000 for Liverpool charity



A gruelling cycle challenge that took place earlier this year has announced it has raised more than £25,000 for cancer research in the region.

Cycle of Hope, an event launched in July by North West Cancer Research, saw 12 challengers, including three cancer researchers from the region, cycle a combined 3,000 miles across England, Wales and Ireland.

The annual Cycle of Hope event started on 4th July and took four days to complete. The route began in Liverpool and took the cyclists on a scenic route through the Cheshire countryside and Welsh borders, before completing the course in Dublin on 7th July.

Alastair Richards, CEO at North West Cancer Research, said: “The cyclists’ dedication to training and fundraising was phenomenal and seeing them cross the finish line was an amazing moment.

I would like to thank them for their efforts on behalf of all of us at North West Cancer Research, they should be incredibly proud of their achievements.”

Cycle of Hope will return next year, following a slightly different format than usual. To open the event up to even more people, next year the cycle will take place over one day and offer riders the choice of cycling a 60-mile route, or a slightly shorter 60km route.





Cycle of Hope  
has raised  
a total of  
£25,000





## Sun Safety Awareness Campaign

This summer we relaunched our skin cancer campaign with an aim of educating the public on basic sun-safety as well as helping them to be aware of the early signs and symptoms of skin cancer.

We began the campaign by engaging with holidaymakers at Liverpool John Lennon Airport to ensure that they stayed safe while abroad.

A few weeks later we were in Lancaster city centre, where we made sure our giant deck chair had pride of place on the Lancaster Plinth in Market Square and spoke to the public about the importance of protecting their skin from UV damage.

During the August bank holiday weekend, we were at Chavasse Park in Liverpool One. Our giant deck chair proved a huge hit with shoppers and nobody left empty handed as we provided everyone with our Sun Safety Guides and Sun Sense sun screen.

As part of the campaign we have also re-introduced our Sun Safety Pledge, a joint initiative between ourselves and Public Health Liverpool designed to encourage

employers to put their outdoor workers' safety front of mind by raising awareness of the importance of using adequate sun protection.

Amongst those signing up to the pledge this year were Liverpool John Lennon Airport, who have over 100 operational staff working outdoors on a daily basis, Magenta Living, the largest housing provider in the Wirral with 200 outdoor workers and Stewart Milne Homes, one of the largest housebuilders in the North West with 70 staff working outdoors daily.

An online toolkit was made available to the businesses and their staff with advice including covering up and using sun screen between May and September, paying particular attention to exposed areas such as ears, neck and lips.

Our school work began at Liverpool College, as pupils took part in a specialist assembly to get them ready for the summer holidays. We spoke to over 200 pupils at the school to help them understand how to protect themselves, as well as giving them some information to

take home to their families to show how to check moles using the NHS ABCDE guidance. By starting in schools, North West Cancer Research hopes to arm the younger generation with the relevant information about sun safety and encourage a positive association with sun cream application.

Our campaign also took us to Llanrwst in North Wales for the National Eisteddfod festival; a celebration of the culture and language in Wales. We encouraged visitors to check out the difference sun screen can make in protecting your skin with a few snaps in front of our UV camera. Working alongside Bangor University, we had cell slides straight from the lab that visitors could inspect through microscopes to see the different stages of cancer growth. Our Sun Safety Accessory Kits proved popular with families who could choose to make a keyring or bracelet with UV sensitive beads that glow under the sun's rays.

Over the course of the campaign, we engaged directly with over 12,500 people.

We showed visitors of Eisteddfod the difference sun screen can make in protecting your skin from the sun's rays with our cool UV camera!







Protecting your  
skin from the  
sun's rays





## Head and Neck Cancer Awareness Campaign

In the North West, around 1,100 people a year are diagnosed with head and neck cancer – one of the worst rates in the UK. Men are three times more likely to be diagnosed with head and neck cancer than women. In a bid to encourage men to be more vigilant and visit their GP, we created a campaign, working with a host of local celebrities, to highlight the early signs and symptoms of the disease.

The #SPEAKOUT campaign saw well-known names such as BBC broadcaster Mark Radcliffe, football legend Graeme Sharp, comedian Dave Spikey and snooker player and commentator John Parrot feature in an informative video that was shared across our social media channels throughout April and May. Mark Radcliffe also shared his experience of dealing with cancer of the tongue and lymph nodes, along with equestrian champ Ben Hobday after his diagnosis with Burkitt's non-Hodgkin's lymphoma.

Along with the #SPEAKOUT campaign video and press coverage, we also produced an infographic highlighting the symptoms and causes of head and neck cancer, ensuring the public know what to look out for and how best to avoid developing the disease. The campaign received the support of Public Health Liverpool along with a number of MPs and Mayor of Greater Manchester Andy Burnham.

The campaign has been short-listed for a number of industry awards and we were delighted to receive a prestigious Chartered Institute of Public Relations award for Best Use of Content.

To see the campaign video or find out more information about head and neck cancer, head to [nwcr.org/our-work/campaigns/head-neck/](https://nwcr.org/our-work/campaigns/head-neck/)



BBC broadcaster Mark Radcliffe, shared his experience of dealing with cancer in the #SPEAKOUT campaign video.

**#speakout against cancer. NWCR's award winning Head and Neck Cancer Campaign**





#speakout  
against  
Head and Neck  
Cancer



# Research Report

## Governance

North West Cancer Research is a member of the Association of Medical Research Charities (AMRC) and this means that we follow externally laid down principles in deciding which research applications to fund. All projects are subject to external review by experts from the UK and beyond as we seek to ensure that we only fund the best work and that projects are original – breaking new ground in research. Projects then go before a research funding panel in order to rank them against other applications for funding. Only the very best work is funded.

These research panels are made up of experts from the academic and clinical communities, from across the UK. Potential conflicts of interest are carefully managed.

During the year, we reformed our advisory panels to ensure that they were closely aligned with the work funded. At the start of the year, the Charity had a single Scientific Advisory Group which reviewed all applications. With the change to funding a number of different streams, the Charity introduced separate Advisory Groups to ensure that it had appropriate expertise on the panels to understand and assess the applications received. During the year the Charity therefore had:

- Cancer Discovery Advisory Group
- Underpinning Research Advisory Group
- Applied Research Advisory Group also overseeing Cancer Inequalities Advisory Group

Each Group oversees a funding round and then based on the merits of the proposal makes recommendations to the Board. The final decision on how many projects to fund lies with the Board of Trustees.

The Board of Trustees are informed by the NWCR Research Strategy Group (RSG). This group comprises of senior academics and clinicians who advise on research development and strategy. The research strategy enables researchers to understand what the Charity's priorities for funding are.

The NWCR RSG also advise the Board of Trustees on applications the Charity receives for capacity and structure funding from academic institutions and NHS organisations. These include applications for chairs, lecturers, fellows and summer studentships.

The Charity would like to thank all of the Researchers, Scientists, Academics and others who have given their time this year in order to review and report on the project applications received. This process for gaining funding is highly competitive and therefore the task of reviewing applications is one of growing complexity.

## Public and Patient Representation in Advisory Groups

NWCR strives to fund research that is relevant and important to our local population. The patient voice in our research is vital to influence and evidence our decisions on the importance of the funding applications we receive as well as contributing to our future objectives.

We have engaged with public and patient representatives and we are moving towards fully embedding them in our activities in order to bring the patient voice and perspective into our decision making.

NWCR is grateful for the time and effort the 'experts by experience' members give and for their valuable contributions in our decision making.

### John Marshall PPI representative Advisory Panels and Research Strategy Group.

"I believe in the importance of patients being directly involved in medicine at all levels. It is important for a local charity to ensure they have full public and patient involvement in their decision making because it gives them a full connection with the community they are serving."

## Investing in the cause, care and cure of cancer for our region...

In this financial year, we awarded over £2.7 million to cancer research projects.

This year saw North West Cancer Research prioritise improvements in the experiences and outcomes of people with cancer in our region by funding world-class cancer research.

Our long-standing investment in research has been further enhanced this year through improved research governance and programme developments to improve the lives of people living in the North West of England and North Wales.

In 2018/19, we agreed the following research objectives:

- Improving the prevention, diagnosis and treatment of cancer in the region
- Addressing the inequalities in cancer across the region
- Encouraging collaboration between researchers in the region
- Improving dissemination of the results and impact of our research to the public

This year, we supported a wider range of 'bench to bedside' cancer research through the development of four new streams. This development has allowed us to focus donations on research that seeks a cure for cancer but also improves the lives of people living with cancer now.

We made calls for research proposals in the following areas:

### Cancer Discovery



Changing practice through discoveries in basic biology and the causes of cancer

### Underpinning Translational



Driving the translation of the discoveries in basic science into clinical practice

### Applied Research



Improving cancer outcomes, treatments, services and patient experiences

### Cancer Inequalities



Promoting knowledge and developing strategies to address inequalities in tumour types and populations



## Defining priorities

Ensuring the region's cancer needs are represented in these research streams has been achieved by encouraging researchers to develop proposals that directly benefit people living in the North West and North Wales. This ensures our funding tackles the differences in cancer levels or outcomes as well as the differences or challenges to cancer treatments or services in the region. We are therefore not only driving impact for local people but also contributing to the wider understanding of cancer and clinical or supportive care.

In addition, North West Cancer Research has responded to the high-level priority in the UK to improve cancer outcomes through early diagnosis initiatives.

(The Cancer Strategy England 2015-2020 <https://www.england.nhs.uk/cancer/strategy/>; The Cancer Delivery Plan for Wales 2016-2020 <https://www.england.nhs.uk/cancer/strategy/>)

Across all research programmes, we encourage researchers to develop proposals which aim to promote the earlier diagnosis of cancer and improve outcomes through initiatives that tackle this.



We continue to invest funds to help build research capacity in our region.

## Developing the cancer scientists of tomorrow

We continue to invest funds to help build research capacity in our region. This funding ensures the highest quality research occurs locally and develops the next generation of cancer researchers.

The Research Development Fund has now operated for a number of years. These 'pump priming' grants encourage novel ideas which often require initial funds to test a hypothesis and provide researchers with an opportunity to gather the data required to take the research to the next step.

Our 'Youth Academy' supports early career cancer research scientists through a programme of PhD studentships in cancer discovery science.

For the first time, we have funded a NWCR Career Development Fellowship which sought to attract top quality researchers to the region. A five-year programme was awarded in August 2019 which will develop and establish the Fellow as a future group leader in cancer research.

We also partnered with KESS2, a European Convergence programme, to fund two PhD students and four MRes students in Medical Sciences at Bangor University. These students study cancer biology and build on their early interest and experiences for a future in cancer research.

To attract researchers to cancer research, we also funded a series of Internships with the Faculty of Health in Lancaster University. Summer scholarships in Lancaster allowed undergraduate students to study techniques and methods in cancer research - introducing them to a possible future career in cancer.

## Encouraging collaboration and knowledge sharing

---

North West Cancer Research encourages knowledge sharing to ensure local researchers stay up to date with findings and can share their own research outcomes in a supportive peer to peer environment.

Our annual Scientific Symposium brings together local, national and international researchers, clinicians and scientists to showcase the academic and clinical knowledge generated from the funding of NWCR.

In addition, we were proud to partner with the National Institute of Health Research Clinical Research Network (NIHR CRN). Working in collaboration with NIHR CRN North West Coast, has expanded NWCR's funding and attracted world class researchers to our funded research programmes.

The partnership has also enabled us to share our experiences, knowledge and priorities for the cancer needs of our region.

## 2020 and beyond

---

We continue to strive to meet the cancer needs of our region.

NWCR understands the importance of disseminating the results of the work we fund and demonstrating how this impacts the people in our region. 2020 will see an evaluation of the new research programmes which will help the Board of Trustees assess our impact, plan for the future and benchmark our impact alongside other research charities.

We remain determined to demonstrate impact, create new collaborations and opportunities for research funding and bring the voice of the region into the cancer research we fund.



## Research Report

## Case Studies

Examples of recently funded projects and their expected impact for local people:

**Projects which improve life and the experience of cancer treatment****£294,646****Finding My Way: Adaptation and replication testing of the benefits of online psychological support for cancer survivors.**

Professor Nick Hulbert Williams, University of Chester.

Over one third of cancer patients report anxiety and depression, three quarters report psychological distress. In surveys patients in the North West have reported requiring more support in these areas.

Finding My Way is a web-based programme developed in Australia. It contains six sections that help patients to better cope with the consequences of cancer treatment.

This study will test whether the programme is helpful to patients in the UK, improving the experience of treatment and survivorship in cancer care and potentially saving the NHS valuable resources.

**£33,898****Method optimisation of urine GC-MS analysis to predict dying in lung cancer patients.**

Dr Seamus Coyle, University of Liverpool.

Recognising dying is difficult and is an ongoing difficulty for doctors. One of the challenges healthcare professionals face towards the end of life, is being able to distinguish between when a patient is dying and when a patient's deterioration is reversible.

This study aims to improve the methods used to develop a reliable biomarker test which will lead to a greater understanding of the biology of death and allow the prediction of death in the weeks and days approaching it.

The development of a test to predict dying could lead to healthcare professionals being able to offer the patient and their family choices related to the place of death; decrease patient, family and clinician uncertainty and distress towards the end of life; and result in significant cost savings to the NHS through tailored care.

**Projects which aim to find the causes of cancer****£232,698****Small molecule induced degradation of centrosome clustering proteins: development of a novel, cancer specific therapeutic approach.**

Dr Morgan Gadd and Dr Andrew Fielding, Lancaster University.

Cells need to divide and copy to stay alive and replicate. When this goes wrong a cancer cell can be made which can avoid detection and elimination by the body's own defence mechanisms.

This research will involve studying proteins which can be targeted to stop the cell from avoiding the normal defence mechanisms of the body by clustering centrosomes during cell replication.

In understanding these processes, drugs can then be developed to ultimately stop the cancer cells development.

**Projects which aim to improve the treatments available to patients****£98,041****“Imaging in the Window of Opportunity” Evaluating the role of advanced MRI techniques in detecting early response to immune checkpoint inhibition in a Head and Neck Cancer window of opportunity trial.**

Mr Andrew Schache, University of Liverpool.

Head and neck cancer is prominent in the North West region. Patients who have aggressive, large tumours often have extensive treatment and still have their disease return.

Immunotherapy, which harnesses the body’s own immune system to destroy the cancer, can provide life extending years in head and neck cancer patients whose disease has spread to other parts of the body. However, the number of patients that respond to these treatments is low and clinicians cannot predict which patients will respond.

By using advanced MRI scans this research will look for subtle changes in the tumours of recruited patients which can give clues to early response to immunotherapy treatment. This is checked and analysed alongside changes in the blood and biopsy specimens.

If successful, these biomarkers of immunotherapy response will allow the better targeting of treatments to the patients who are most likely to benefit.

**Projects which improve life and the experience of cancer treatment****£67,301****Patient centred benefit-risk assessment of treatment for colorectal liver metastases in North West England and North Wales.**

Dr Emily Holmes, Bangor University.

Around 256,000 people live with colorectal cancer in the UK. More than 50% of them will develop secondary cancer in their lifetime.

Anti-cancer treatments, given systemically, can prolong life but are often associated with high levels of treatment related side effects which can reduce a patient’s quality of life.

Up to 20% of people will be suitable for liver metastases surgery which offers higher survival rates. However, there are inherent risks to this surgery; it requires visits to distant specialist centres and it is costly to the NHS.

This research will look to establish what the patient and health professional preferences are for benefits and risks of treatment in the North West and North Wales and explore potential inequalities in experiences for subgroups defined by age/frailty and geographical location.

The outcome measures recorded for benefit-risk trade off will be incorporated into clinical evidence and inform practice in the hospital. Understanding how patients trade off benefits and risks, has the potential to improve shared decisions in the clinic and encourage more patient-centred discussions.



## Research Report

# Case Studies

Grants which build capacity in the region and invest in the next generation of cancer researchers

£448,668

### Head and Neck cancer/radiobiology/DNA damage and repair.

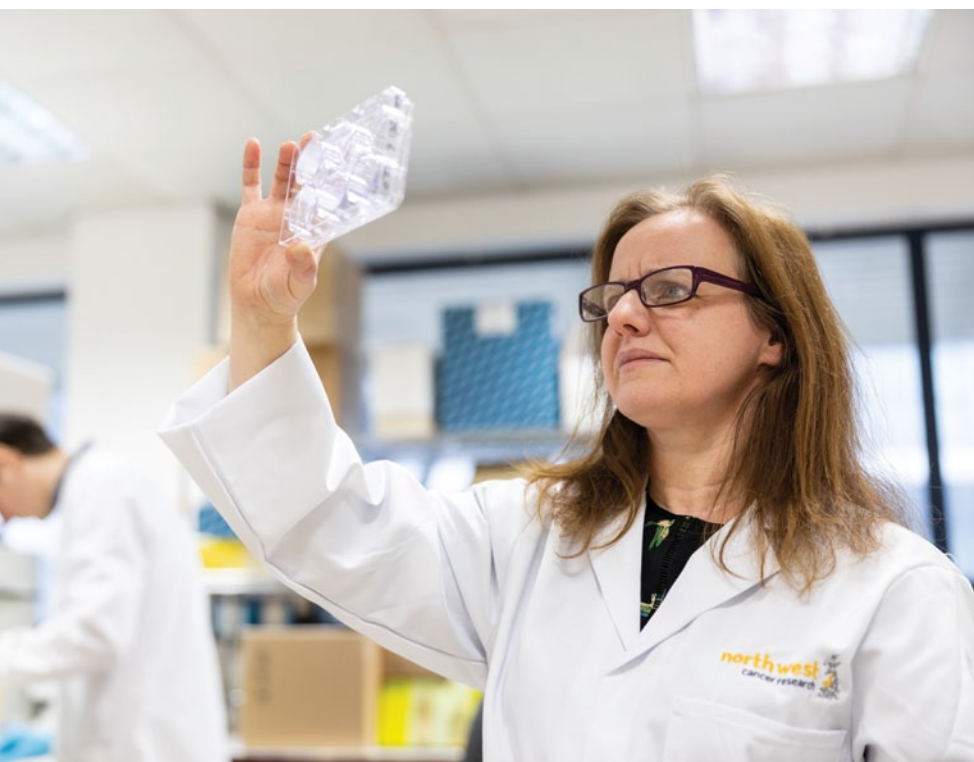
Dr Gabrielle Grundy, University of Liverpool.  
NWCR Career Development Fellowship

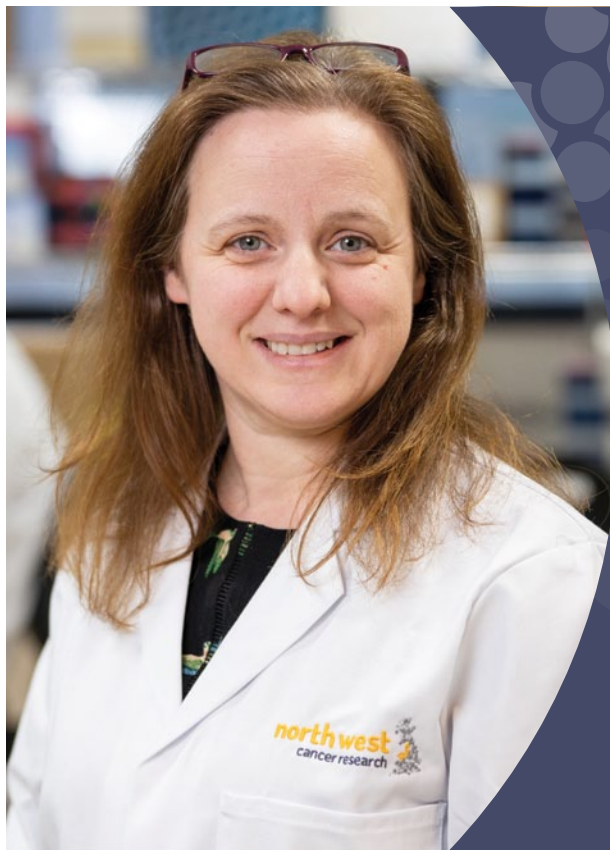
Head and neck cancer affects the skin and lining of the mouth, nose and throat. The North West has three times the national average of this cancer.

Resistance to radiotherapy treatment in this cancer is common and means outcomes can be poor.

This research will look at the mechanisms of resistance to radiotherapy and additionally look at whether the use of a chemotherapy drug can sensitize the cancer cells to allow radiotherapy to become effective.

This could allow to the development of personalised drugs that increase head and neck cancer cell death and better the outcomes for people with this type of cancer.

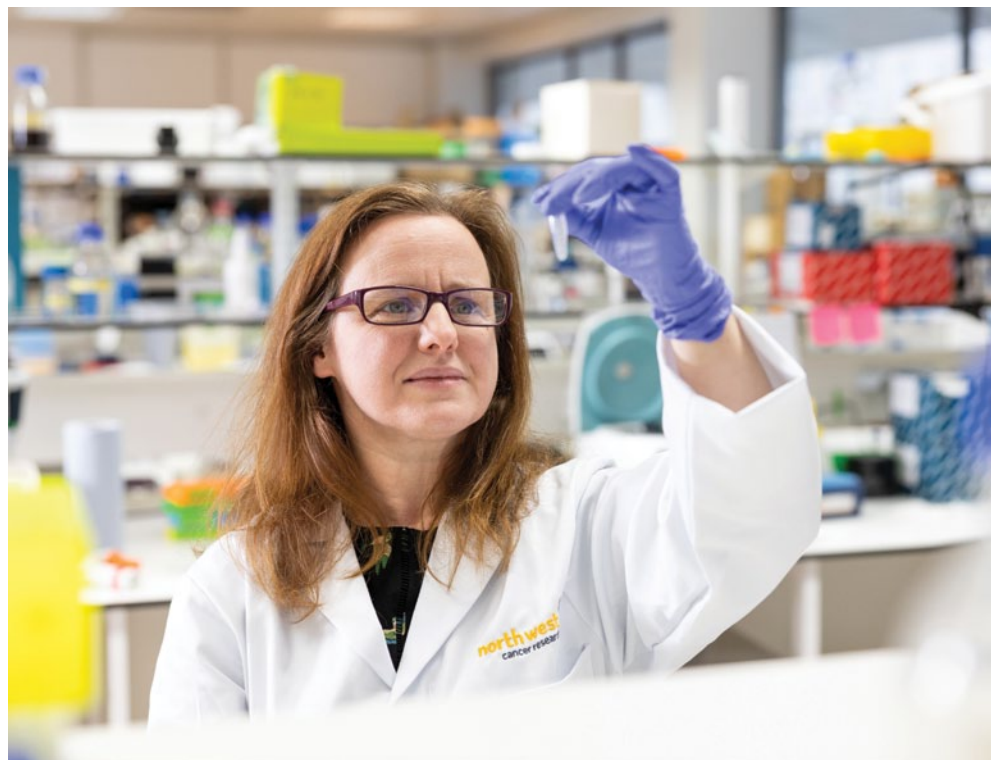




## Dr Gabrielle Grundy

University of Liverpool.

#WomeninScience







We continue to  
strive to meet  
the cancer  
needs of our  
region.



## Currently Funded Projects

**Lancashire & Cumbria****Summer Studentships at the Division of Biomedical and Life Sciences**

Dr Allinson	£15,600 /2 years covering 2018 & 2019
-------------	---------------------------------------

**Development of mouse tail skin as a translational preclinical model for UV exposure and early melanomagenesis**

Dr Mort, Dr Allison	£251,263 /3 years
---------------------	-------------------

**How does p53 link DNA damage signalling to innate immunity?**

Dr Unterholzner	£203,400 /3 years
-----------------	-------------------

**The role of NSMCE2-dependent SUMO modification in the replication stress response**

Dr Elaine Taylor, Dr Mick Urbaniak	£199,908 /3 years
------------------------------------	-------------------

**Living Well During and Beyond Treatment for Gynaecological Cancer: Exploring the Lived Experiences of Patients Undergoing Treatment for Gynaecological Cancer**

Dr Lisa Anne Wood, Daniel Hutton, Dr Lynda Appleton, Dr Vicky Singleston, Dr Karen Whitmarsh, Janet Johnson	£118,787 /2 years
---	-------------------

**Funding for a Lecturer and Fellow in cancer research with x 2 Phd students**

The funding provides support for the appointment of a Lecturer in Cancer research, along with a Fellow, two Phd students and lab-costs for 5-years. It has been match-funded by Lancaster University.

	£441,296 /5 years
--	-------------------

**Small molecule induced degradation of centrosome clustering proteins: development of a novel, cancer-specific therapeutic approach**

Dr Morgan Gadd, Dr Andrew Fielding	£232,696.52/3 years
------------------------------------	---------------------

**Understanding how cells regulate DNA replication to maintain genome stability: Youth Academy PhD studentship**

Dr N Copeland (Supervisor) Freya Ferguson (Student)	3 years
---	---------

**Equipment: Spinning Disc Confocal Microscope for superfast multichannel live imaging**

Dr R Mort	Grant award £50,000
-----------	---------------------



Achieving  
the best local  
research for  
a cancer free  
future.



## North Wales

**Involvement of Mec1ATM/ATR in mitochondrial DNA replication and its implications in cancer cell metabolism**

Dr Cha £199,794 /3 years

**Autophagy dependent survival following Mec1ATM/ATR inactivation**

Dr Cha £196,116 /3 years

**KESS2 Studentship funding**

Funding for four MRes students for 2018/19 along with two PhD students. £97,500

**Patient centred benefit-risk assessment of treatment for colorectal liver metastases in North West England and North Wales**

Dr Emily Holmes, Professor Simon Gollins, Mr Stephen Fenwick, Mrs Louise Jones,  
Professor Dyfrig Hughes £67,301 /1 year

**KESS2 NWCR Institute Bangor University MRes student program 2019/20**

Dr Edgar Hartsuiker £27,000

**Understanding the role of primary cilia and its role in hub signalling:  
Youth Academy PhD Studentship**

Dr C Staples (Supervisor) Angharad Wilkie (Student) 4 years

## Merseyside & Cheshire

### **Finding My Way UK: Adaptation and replication testing of the benefits of online psychological support for cancer survivors**

Prof Nicholas Hulbert-Williams, Dr Lee Hulbert-Williams, Dr Lisa Beatty,  
Prof Bogda Koczwara, Dr Laura Ashley, Prof Neil Coulson, Dr Peter Hall,  
Prof Eila Watson, Mrs Sue Millington, Mr Richard Jackson

£249,646/3 years

### **Determining ibrutinib's potential to treat human leukaemia's – novel uses for an exciting new Bruton's tyrosine kinase (BTK) inhibitor**

Prof D MacEwan, Prof A Pettitt, Dr J Slupsky, Dr A O'Donnell

£162,443/3 years

### **Development of novel multiplexable single-colour Ras GTPase sensors to compare spatio-temporal features of Ras signalling cascades with subcellular resolution**

Dr M Stagi, Prof I Prior

£192,220/3 years

### **Phosphorylation analysis of the master centriole regulator Polo-like kinase 4 using target validated kinase inhibitors**

Dr P Eyers, Prof C Eyers, Dr C Staples.

£196,241/3 years

### **S18-phosphorylation controls catalytic activity of the cancer-associated deubiquitylase USP7: defining the implications for cancer biology and USP7 inhibitor therapy**

Prof J Coulson, Dr S Darling

£205,292/3 years

### **Investigating in vivo resistance mechanisms to MEK inhibitors in uveal melanoma to enable novel combinational therapies**

Dr J Sacco, Prof S Coupland, Dr J Coulson, Dr P Eyers, Dr H Kalirai, Dr S Lake

£135,248.46/2 years

### **Gene edited reversal of FLT3-ITD mutations in acute myeloid leukaemia and its effect on chemotherapy resistance**

Prof D J MacEwan, Prof R E Clarke

£181,676/3 years

### **The role of the ERK5 signalling axis in vemurafenib-resistant melanoma progression**

Dr M Cross, Mr R Prichard-Jones, Dr C Tournier

£131,790/3 years

### **Understanding the relationship between BCR signalling capacity and clonal behaviour in Chronic Lymphocytic Leukaemia**

Dr N Kalakonda, Dr J R R Slupsky, Prof A Pettitt, Prof D MacEwan, Prof F Falciani

£195,288/3 years



---

### **Novel therapeutic approaches for personalised therapy of Head and Neck cancer**

Dr Shankar Varadarajan, Dr Joe Sacco, Dr Janet M Risk, Professor Gerald M Cohen £192,243 /3 years

---

### **Evaluation of novel combination drug protocols for neuroblastoma using advanced imaging in a chick embryo model**

Dr Violaine See, Professor Paul Losty £117,382 /2 years

---

### **Forcing angiogenesis: Transcriptional control by integrin-dependent mechanotransduction during angiogenesis**

Dr Mark Morgan, Dr Katarzyna Wolanska £224,182 /3 years

---

### **Isolation and identification of the chromatin remodelling enzymes required for base excision repair**

Dr Jason Parsons £109,991 /3 years

---

### **Towards the clinical positioning of a first selective DUB inhibitor**

Dr Sylvie Urbe, Prof Michael Clague, Dr Barry L Pizer, Dr Claire Heride £141,569 /2 years

---

### **Non-canonical protein phosphorylation in human cancer cells**

Prof Claire Eyers, Prof Pat Eyers, Dr Andrew Jones £229,675 /3 years

---

### **Absolute quantitation of endogenous Ras isoform protein abundance: Does codon bias explain the predominance of KRAS mutations in cancer**

Prof Ian Prior £127,257 / 2 years

---

### **Kinome profiling and mass cytometry as tools to detect rewiring of B cell receptor signalling in the malignant cells of chronic lymphocytic leukaemia patients taking ibrutinib**

Dr J Slupsky, Prof. I Prior £217,307 /3 years

---

### **Integrating biomarkers to stratify adjuvant chemotherapy in pancreatic cancer patients**

Dr William Greenhalf, Dr Dan Palmer, Dr Eithne Costello £193,220 / 3 years

---

### **Characterisation of the tumour- immune microenvironment in metastatic uveal melanoma**

Prof Sarah Coupland, Dr Carlos Rogerio de Figueiredo £132,434 / 2 years

---

## Merseyside & Cheshire

### Function of stroma-derived gas6 in pancreatic cancer progression and metastasis

Dr Ainhua Mielgo; Mr Robert Jones

£114,450 / 3 years

### Improving the biological response of proton beam therapy in head and neck cancer

Dr Jason Parsons

£202,129 / 3 years

### Tribbles pseudokinases: Analysis of cancer-associated signalling mechanisms

Prof Patrick Eyers, Dr Dominic Byrne, Prof Claire Eyers

£221,262 / 3 years

### The role of the ERK5 signalling axis in BRAF inhibitor-resistant melanoma progression

Dr Mike Cross, Dr Rowan Pritchard-Jones, Dr Cathy Tournier, Dr Emanuele Giurisato,  
Dr Harish Poptani, Prof Clare Eyers

£229,883 / 3 years

### Method optimisation of urine GC-MS analysis to predict dying in lung cancer patients

Dr Seamus Coyle, Professor John Ellershaw, Prof Chris Probert, Prof Mark Boyd

£33,899 / 1 year

### DUB on the Tracks: USP31, a new regulator of microtubule dynamics in cancer cells

Professor Michael Clague, Professor Sylvia Urbe

£128,850/3 years

### Sensing tension: Bidirectional feedback mechanisms controlling breast cancer invasion

Dr Mark Morgan, Dr Tobias Zech, Dr Dean Hammond, Asst. Professor Pere Roca-Cusachs,  
Louise Jones, Prof John Marshall.

£233,087/3 years

### A prospective study of genomic landscape of brain metastasis secondary to breast cancer utilising cell free DNA derived from cerebral spinal fluid

Prof Carlo Palmieri, Prof Janet Brown, Dr Vinton Wai Tung Cheng, Dr Ellen Copson,  
Dr Athina Giannoudis, Mr Michael Jenkinson, Mr Richard Jackson, Dr Iain MacPherson,  
Prof Jacqui Shaw, Mrs Lesley Stephen

£254,387.35/ 3 years

### “Imaging in the Window of Opportunity” Evaluating the role of advanced MRI techniques in detecting early response to immune checkpoint inhibition in a Head and Neck Cancer window of opportunity trial

Mr Andrew Schache, Prof Harish Poptani, Dr Joe Sacco, Dr Rahcel Brooker, Ms Eftychia-Eirini Psarelli,  
Dr Kumar Das, Dr Maneesh Bhojak, Dr Rebecca Hanlon, Dr Gaurav Sundar

£98,041.75/18 months



---

**Intron retention and alternative polyadenylation control of LAMA3 in head and neck squamous cell carcinoma; mechanistic insight and potential drug target**

Dr K Hamil, DR J Risk, Dr S Tew

£188,511/3 years

---

**Pharmacological stimulation of NRF2 to enhance liver regeneration following tumour resection**

Dr I Copple, Professor C Goldring, Mr M Elmasry, Mr S Fenwick,  
Professor D Palmer, Professor K Park

£199,417/2.5 years

---

**Validating candidate biomarkers for future use in pancreatic cancer detection amongst individuals with new-onset diabetes**

Professor E Costello-Goldring

£171,343/2 years

---

**North West Cancer Research Centre**

The funding provides support for a Centre Administrator, a rolling PhD Studentship programme, the LCIRN co-ordinator and support for the Research Development Fund. This funding was extended in year to 31 December 2017 at a cost of £84,250

£835,232 / six years

---

**Understanding the relative biological effect of Proton Beam Therapy and determining differences in response of head and neck squamous cell carcinoma and uveal melanoma to x-ray and proton beam irradiation: Youth Academy PhD Studentship**

Dr J Parsons (Supervisor) Terpsi Vitti (Student)

3 years

---

**Identifying imaging biomarkers to detect molecular and genetic characteristics of glioma and glioblastoma: Youth Academy PhD Studentship**

Prof H Poptani (Supervisor) Tom Leather (Student)

3 years

---

**Investigation the role of hypoxia on brain tumour cell division utilising in vivo Glioblastoma models**

Prof H Poptani (Supervisor) Clare Kelly (Student)

3 years

---

**Insights into liver regeneration and novel strategies aimed at enhancing crucial hepatic repair**

Dr I Copple (Supervisor) Tobias Bunday (Student)

3 years

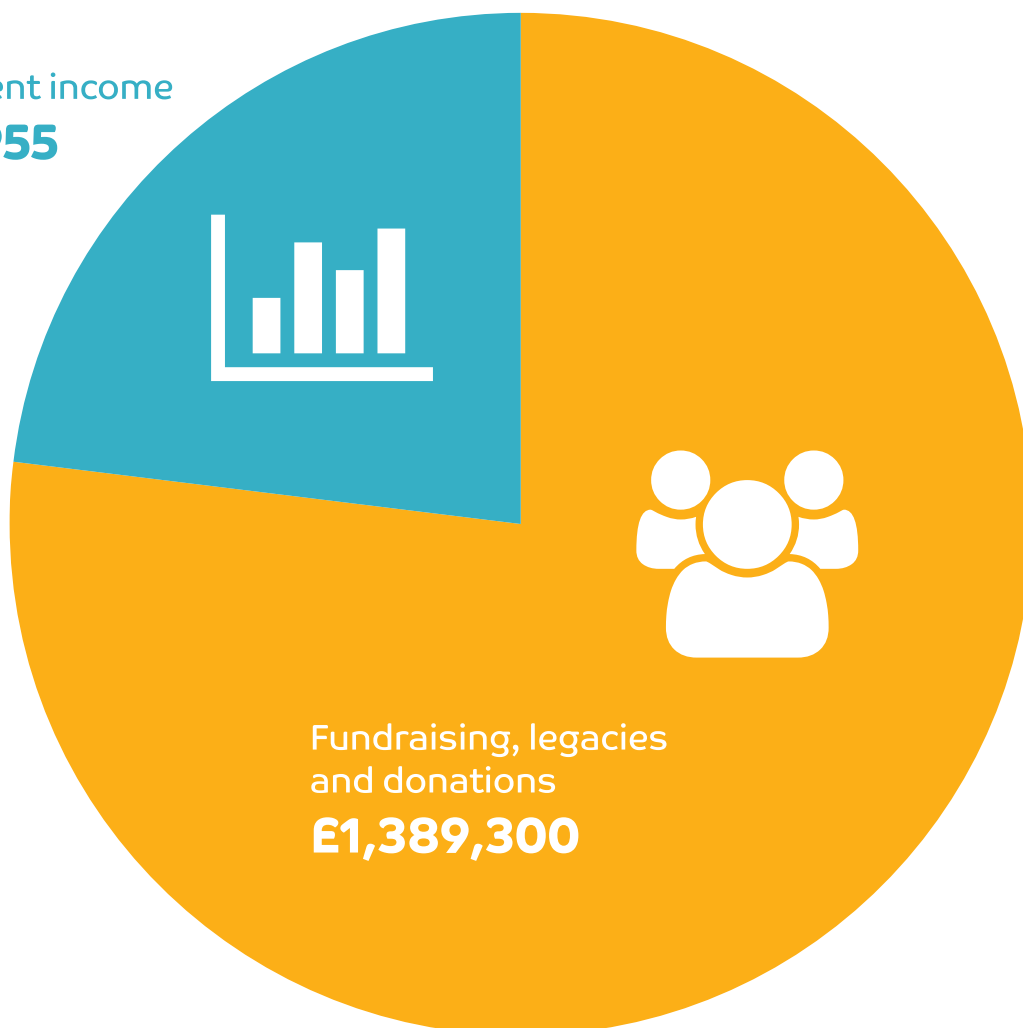
---

## Financial Summary 2018-2019

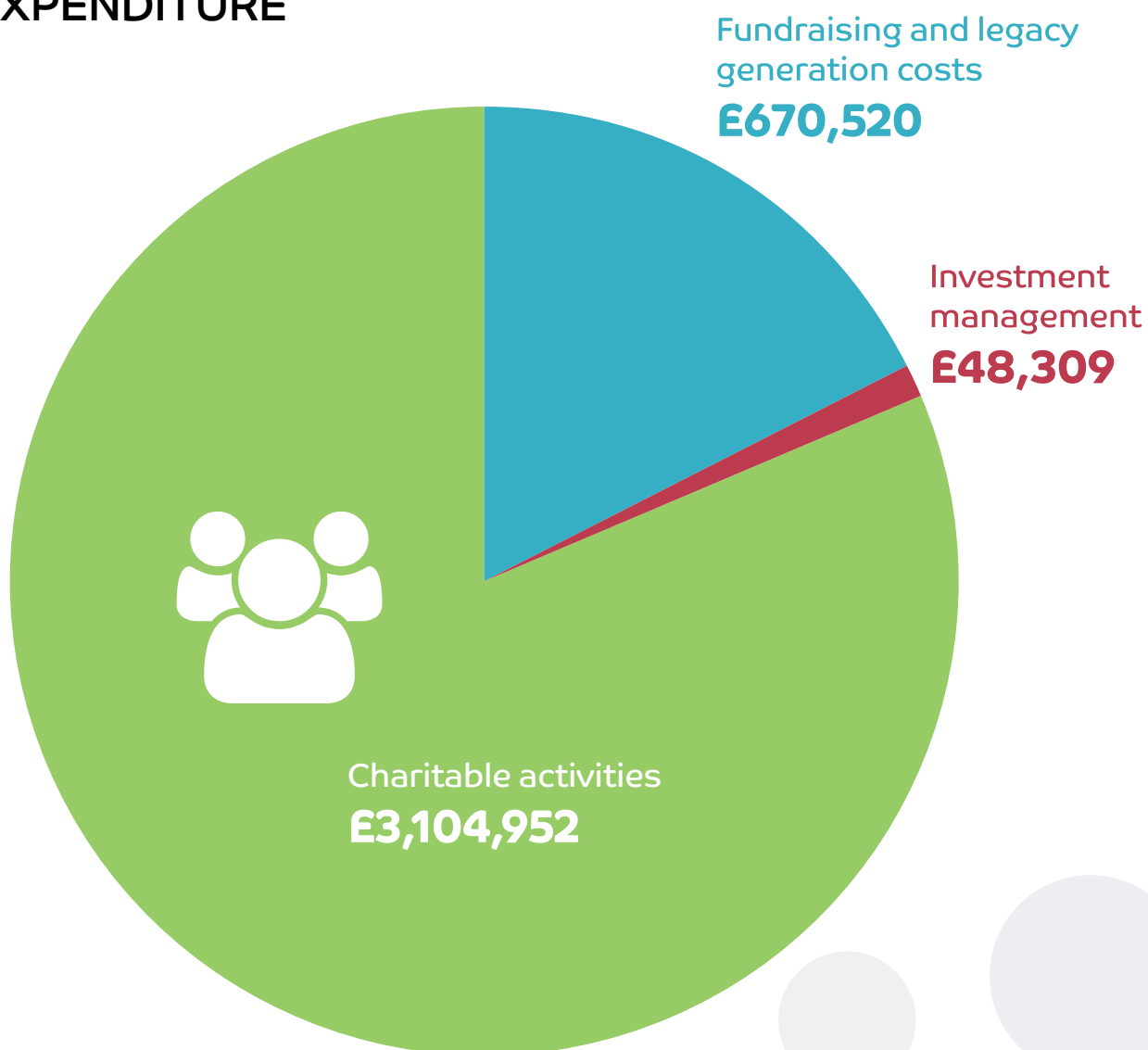
This summary gives an overview of how we have performed during the financial year ending 30 September 2019. The full Annual Report and Financial Statements are available from the North West Cancer Research office.

### INCOME

Investment income  
**£410,955**



## EXPENDITURE





## Statement of Financial Activities

For the year ended 30 September 2019

	Unrestricted and total funds 2019	Restricted funds 2019	Total funds 2019	Total funds 2018
<b>INCOME FROM:</b>				
Donations and legacies	£1,385,300	£4,000	£1,389,300	£2,078,815
Investments	£410,955	-	£410,955	£411,643
Assets received from CPRF	-	-	-	£143,631
<b>TOTAL INCOME</b>	<b>£1,796,255</b>	<b>£4,000</b>	<b>£1,800,255</b>	<b>£2,634,089</b>
<b>EXPENDITURE ON:</b>				
Fundraising and legacy generation costs	£669,979	£541	£670,520	£642,571
Investment management	£48,309	-	£48,309	£56,464
Charitable activities	£3,104,952	-	£3,104,952	£1,638,090
<b>TOTAL EXPENDITURE</b>	<b>£3,823,240</b>	<b>£541</b>	<b>£3,823,781</b>	<b>£2,337,125</b>
<b>NET INCOME/(EXPENDITURE) BEFORE INVESTMENT GAINS</b>	<b>(£2,026,985)</b>	<b>£3,459</b>	<b>(£2,023,526)</b>	<b>£296,964</b>
GAINS/(LOSSES) ON INVESTMENTS	£93,325	-	£93,325	£254,860
<b>NET MOVEMENT IN FUNDS</b>	<b>(£1,933,660)</b>	<b>£3,459</b>	<b>(£1,930,201)</b>	<b>£551,824</b>
<b>RECONCILIATION OF FUNDS:</b>				
Total funds brought forward	£6,209,664	£100	£6,209,764	£5,657,940
<b>TOTAL FUNDS CARRIED FORWARD</b>	<b>£4,276,004</b>	<b>£3,559</b>	<b>£4,279,563</b>	<b>£6,209,764</b>

## Balance Sheet

As at 30 September 2019

	2019	2018
<b>FIXED ASSETS</b>		
Tangible assets	£7,568	-
Investments	£10,132,177	£11,054,776
	<b>£10,139,745</b>	<b>£11,054,776</b>
<b>CURRENT ASSETS</b>		
Stocks	£10,142	£7,240
Debtors	£676,672	£404,294
Cash at bank and in hand	£295,214	£499,440
	<b>£982,028</b>	<b>£910,974</b>
<b>CREDITORS: amounts falling due in less than one year</b>	<b>(£3,484,225)</b>	<b>(£3,197,772)</b>
<b>NET CURRENT LIABILITIES</b>	<b>(£2,502,198)</b>	<b>(£2,286,798)</b>
<b>TOTAL ASSETS LESS CURRENT LIABILITIES</b>	<b>£7,637,547</b>	<b>£8,767,978</b>
<b>CREDITORS: amounts falling due after more than one year</b>	<b>(£3,357,985)</b>	<b>(£2,558,214)</b>
<b>NET ASSETS</b>	<b>£4,279,563</b>	<b>£6,209,764</b>
<b>CHARITY FUNDS</b>		
Restricted funds	£3,559	£100
Unrestricted funds	£4,276,004	£6,209,664
<b>TOTAL FUNDS</b>	<b>£4,279,563</b>	<b>£6,209,764</b>

## Thank you to our funders and supporters



The continued generosity of our funders and supporters throughout the past year has enabled us to continue to put our region's cancer needs first by tackling the cause, improving the care and finding the cure for cancer. Our sincere thanks go to them.

In particular, we would like to thank the following grant-makers for their support:

- Charles Brotherton Trust
- Elda Latin Charitable Trust
- Groundwork UK
- Hill Dickinson LLP
- Laspen Trust
- The Leslie Bibby Fund - LCVS
- The John Behrend Trust - LCVS
- Lord Leverhulme's Charitable Trust
- Scottish Power LCVS
- Sir Donald and Lady Edna Wilson Charitable Trust
- St James Place Foundation
- The John Gilpin Trust
- The L A Jones Charitable Trust
- The L A Jones Charitable Trust
- The Pennycress Trust
- The Red Rose Charitable Trust
- The Whinlatter Fund - LCVS



# Trustees, Advisors and Patrons

## Trustees and officers of the Board

Mr N S Lanceley FCA, DL	Chairman and Chair of the Nominations
Mrs F Street	Vice Chair
Mrs H Atherton	Chair of the Marketing and Fundraising
Mrs C Bond CPFA	Honorary Treasurer
Mr M Haig	
Miss C Jones BA, ACIS	Chair of the Investment Committee
Mrs M Owen	Resigned 15 October 2019
Dr P Robertshaw PhD, Dip DM	
Prof D R Sibson PhD, BSc	
Mr Stephen Claus LLB	
Mr P Webster	Appointed 10 February 2020
Mr M Ore	Appointed 10 February 2020
Dr S Kothari PhD, MBA	Appointed 10 February 2020
Dr Michael Carter CPsychol AFBPsS	Appointed 10 February 2020
Michael Potts FCA, FRSA, DL	Hon. President
Danielle Louise Thomas	Ambassador

## Patrons

The Most Reverend John Davies	The Archbishop of Wales
The Most Reverend Malcolm McMahon	The Archbishop of Liverpool
The Right Reverend James Newcome	The Lord Bishop of Carlisle
The Right Reverend Peter Forster	The Lord Bishop of Chester
The Right Reverend Paul Bayes	The Bishop of Liverpool
The Right Reverend Gregory Cameron	The Bishop of St Asaph
The Right Reverend Peter Eagles	The Bishop of Sodor and Man
The Right Reverend Beverley Mason	The Bishop of Warrington
Edmond Seymour Bailey	Lord Lieutenant of Gwynedd
Mrs Tia Jones	Lord Lieutenant of Powys
Mark Blundell	Lord Lieutenant of Merseyside
Prof Dame Janet Beer	The Vice Chancellor, The University of Liverpool
Prof Mark Power	Interim Vice Chancellor, Liverpool John Moores University
Dr Steve Ryan	The President of the Liverpool Medical Institution
The Most Honourable Charles Paget	The Marquess of Anglesey
The Most Honourable David Cholmondeley	The Marquess of Cholmondeley
Lord Mostyn	
Dame Lorna Muirhead	
Henry Bowring	

Independent Auditors  
Crowe UK LL P, The Lexicon, Mount Street, Manchester, M2 5NT

Bankers  
Natwest, 247 High Street, Bangor, Gwynedd, LL57 1RW

Solicitors  
Brabners LL P, Horton House, Exchange Flags, Liverpool L2 3YL.

Investment Managers  
Investec Wealth and Investment Ltd. The Plaza, Old Hall Street, Liverpool L3 9AB .  
OLIM Ltd. 1 King's Arms Yard, London, EC2R 7AF .



**Putting our  
region's cancer  
needs first**

## **Get in touch**

---

E: [info@nwcr.org](mailto:info@nwcr.org)  
T: 0151 709 2919

W: [nwcr.org](http://nwcr.org)  
Registered Charity No. 519357